

MASONRY AND FLASHING REPAIRS AT: HUNTLEY HIGH SCHOOL, HEINEMAN MIDDLE SCHOOL, AND MARLOWE MIDDLE SCHOOL

HUNTLEY COMMUNITY SCHOOL DISTRICT #158

Algonquin, IL

MASONRY AND FLASHING REPAIRS AT: HUNTLEY HIGH SCHOOL, HEINEMAN MIDDLE SCHOOL, AND MARLOWE MIDDLE SCHOOL

HUNTLEY COMMUNITY SCHOOL DISTRICT #158
650 Academic Drive
Algonquin, IL 60102



architects
engineers
www.woldae.com

110 North Brockway St. Tel: 847.241.6100
Two Hundred Twenty Palatine, IL 60067 Fax: 847.241.6105
mailto:woldae.com

ARCHITECTURAL

- A1.51 HUNTLEY HIGH SCHOOL ROOF PLAN
- A1.52 HEINEMAN MIDDLE SCHOOL ROOF PLAN
- A1.53 MARLOWE MIDDLE SCHOOL ROOF PLAN
- A2.01 HEINEMAN MIDDLE SCHOOL- EXTERIOR ELEVATIONS
- A2.02 HEINEMAN MIDDLE SCHOOL- EXTERIOR ELEVATIONS
- A2.03 MARLOWE MIDDLE SCHOOL- EXTERIOR ELEVATIONS
- A2.04 MARLOWE MIDDLE SCHOOL- EXTERIOR ELEVATIONS
- A3.01 TYPICAL DETAILS

IL

Copyright © 2015 Wold Architects Engineers, Inc. All rights reserved. No part of this document may be reproduced without written permission from Wold Architects Engineers, Inc.

MASONRY AND FLASHING REPAIRS AT: HUNTLEY HIGH SCHOOL, HEINEMAN MIDDLE SCHOOL, AND MARLOWE MIDDLE SCHOOL

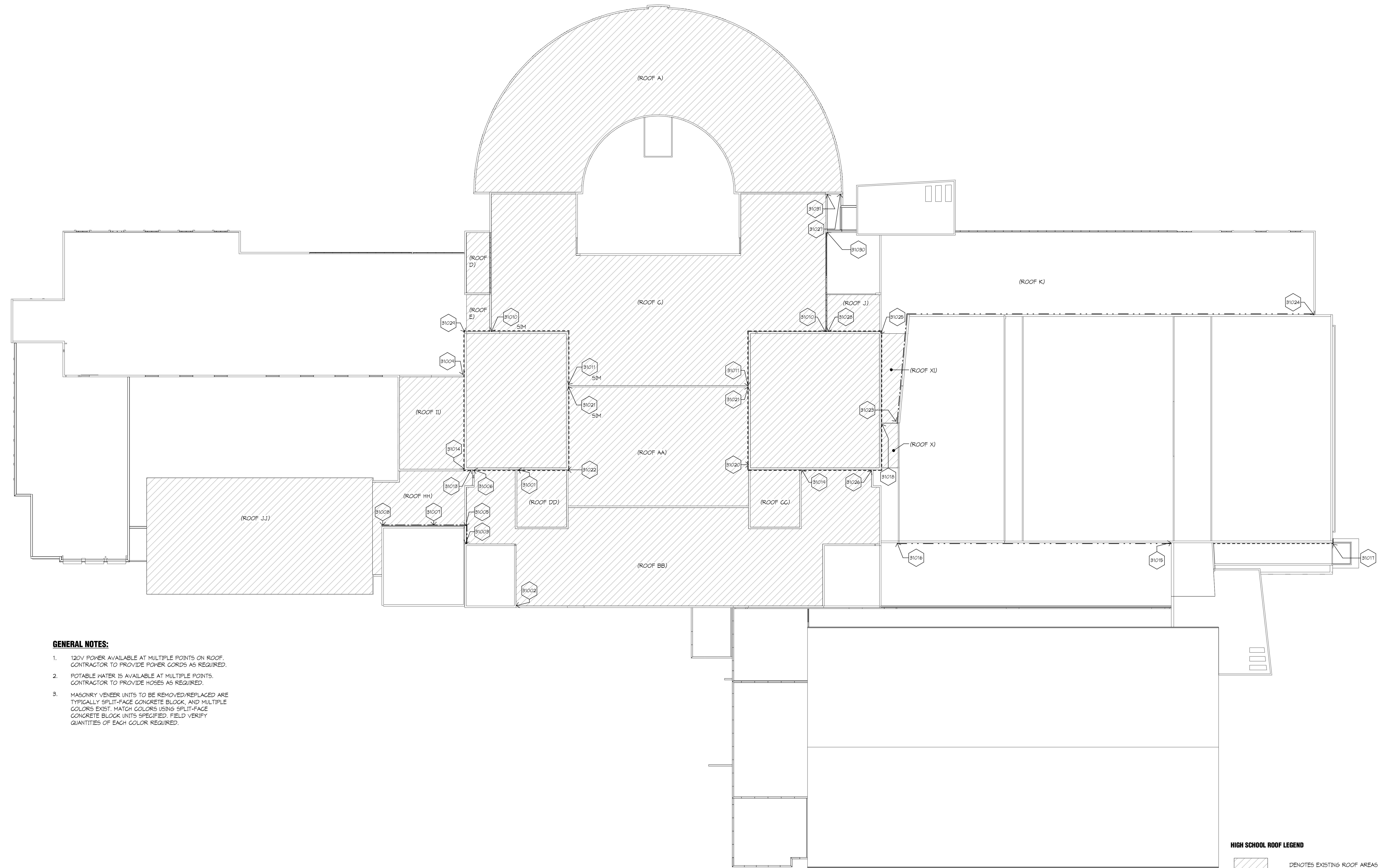
HUNTLEY COMMUNITY SCHOOL DISTRICT #158
650 Academic Drive
Algonquin, IL 60102



architects engineers
www.woldae.com

110 North Brockway St. Tel: 847.241.6100
Two Hundred Twenty Palatine, IL 60067 Fax: 847.241.6105
mailto:woldae.com

IL



GENERAL NOTES:

- 120V POWER AVAILABLE AT MULTIPLE POINTS ON ROOF. CONTRACTOR TO PROVIDE POWER CORDS AS REQUIRED.
- POTABLE WATER IS AVAILABLE AT MULTIPLE POINTS. CONTRACTOR TO PROVIDE HOSES AS REQUIRED.
- MASONRY VENEER UNITS TO BE REMOVED/REPLACED ARE TYPICALLY SPLIT-FACE CONCRETE BLOCK, AND MULTIPLE COLORS EXIST. MATCH COLORS USING SPLIT-FACE CONCRETE BLOCK UNITS SPECIFIED. FIELD VERIFY QUANTITIES OF EACH COLOR REQUIRED.

Copyright © 2016 Wold Architects Engineers, Inc. All rights reserved. No part of this drawing may be reproduced, stored in a retrieval system, or transmitted in any form or by any means, electronic, mechanical, photocopying, recording, or by any information storage and retrieval system, without the prior written permission of Wold Architects Engineers, Inc.

F1 HUNTLEY HIGH SCHOOL ROOF PLAN
1" = 30'-0"
0 22'-6" 45'

HIGH SCHOOL ROOF LEGEND

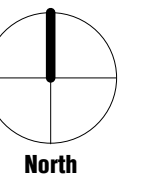
- DENOTES EXISTING ROOF AREAS TO BE RE-ROOFED DURING SUMMER 2016 UNDER SEPARATE CONTRACT.
- DENOTES THROUGH WALL FLASHING REPAIR WORK TO BE INCLUDED IN BASE BID. SEE TYPICAL DETAILS C1/A3.01 & D4/A3.01
- DENOTES THROUGH WALL FLASHING REPAIR WORK TO BE INCLUDED IN ALTERNATE #1. SEE TYPICAL DETAILS C1/A3.01 & D4/A3.01
- DENOTES THROUGH WALL FLASHING REPAIR WORK TO BE INCLUDED IN ALTERNATE #2. SEE TYPICAL DETAILS C1/A3.01 & D4/A3.01
- DENOTES IMAGE INCLUDED WITHIN PROJECT MANUAL (AND WORK DESCRIBED THEREIN)
- DENOTES DETAIL OF CONSTRUCTION INCLUDED ON DRAWING SHEET.

I hereby certify that this plan, specification or report was prepared by me or under my direct supervision and that I am a duly Licensed ARCHITECT under the laws of the State of IL

Registration Number: TEDD STROCHSHOLD 001-022603 Date: 4/8/2016

Revisions	Date	Num

Comm: 163025
Date: 4/14/2016
Drawn: JRK
Check: TS



HUNTLEY HIGH SCHOOL ROOF PLAN

Scale: As indicated

A1.51

A

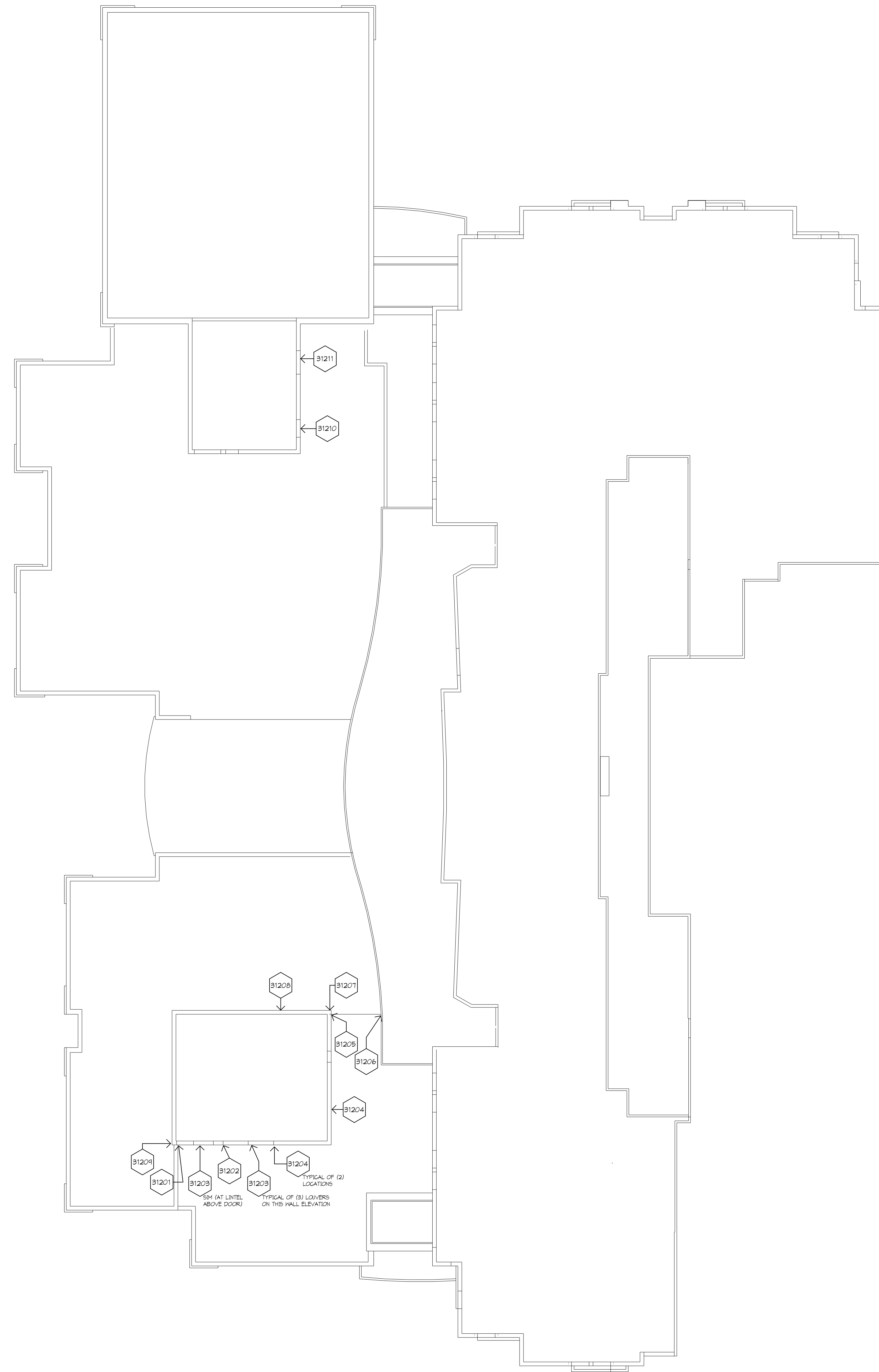
**MASONRY AND FLASHING
REPAIRS AT: HUNTLEY
HIGH SCHOOL,
HEINEMAN MIDDLE
SCHOOL, AND MARLOWE
MIDDLE SCHOOL**

**HUNTLEY COMMUNITY
SCHOOL DISTRICT #158**
650 Academic Drive
Algonquin, IL 60102



**architects
engineers**
www.woldae.com

110 North Broadway St. Tel: 847.241.6100
Two Hundred Twenty Fax: 847.241.6105
Palatine, IL 60067 Mail: woldae.com



GENERAL NOTES:

- 120V POWER AVAILABLE AT MULTIPLE POINTS ON ROOF. CONTRACTOR TO PROVIDE POWER CORDS AS REQUIRED.
- POTABLE WATER IS AVAILABLE AT MULTIPLE POINTS. CONTRACTOR TO PROVIDE HOSES AS REQUIRED.
- MASONRY VENEER UNITS TO BE REMOVED/REPLACED ARE TYPICALLY UTILITY SIZE BRICK.
- SEE ALSO EXTERIOR ELEVATION DRAWINGS FOR WORK AT EXTERIOR WALL OF THE BUILDING.

MIDDLE SCHOOL ROOF LEGEND

- DENOTES IMAGE INCLUDED WITHIN PROJECT MANUAL (AND WORK DESCRIBED THEREIN).
- DENOTES DETAIL OF CONSTRUCTION INCLUDED ON DRAWING SHEET.
- DENOTES THROUGH WALL FLASHING REPAIR WORK TO BE INCLUDED IN BASE BID. SEE TYPICAL DETAILS C1/A3.01 & D4/A3.01

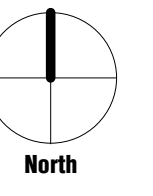
I hereby certify that this plan, specification or report was prepared by me or under my direct supervision and that I am a duly Licensed ARCHITECT

under the laws of the State of IL

Registration Number: TEDD STROHSKOLD 001-020603 Date: 4/8/2016

Description	Revisions		Num
	Date	Rev	

Comm: 163025
Date: 4/14/2016
Drawn: JRK
Check: TS



**HEINEMAN MIDDLE
SCHOOL ROOF PLAN**

Scale: As indicated

A1.52

HEINEMAN MIDDLE SCHOOL ROOF PLAN
1" = 20'-0"
0 15' 30'

Copyright © 2016 Wold Architects Engineers, Inc. All rights reserved. No part of this drawing may be reproduced without the written consent of Wold Architects Engineers, Inc.

IL

A

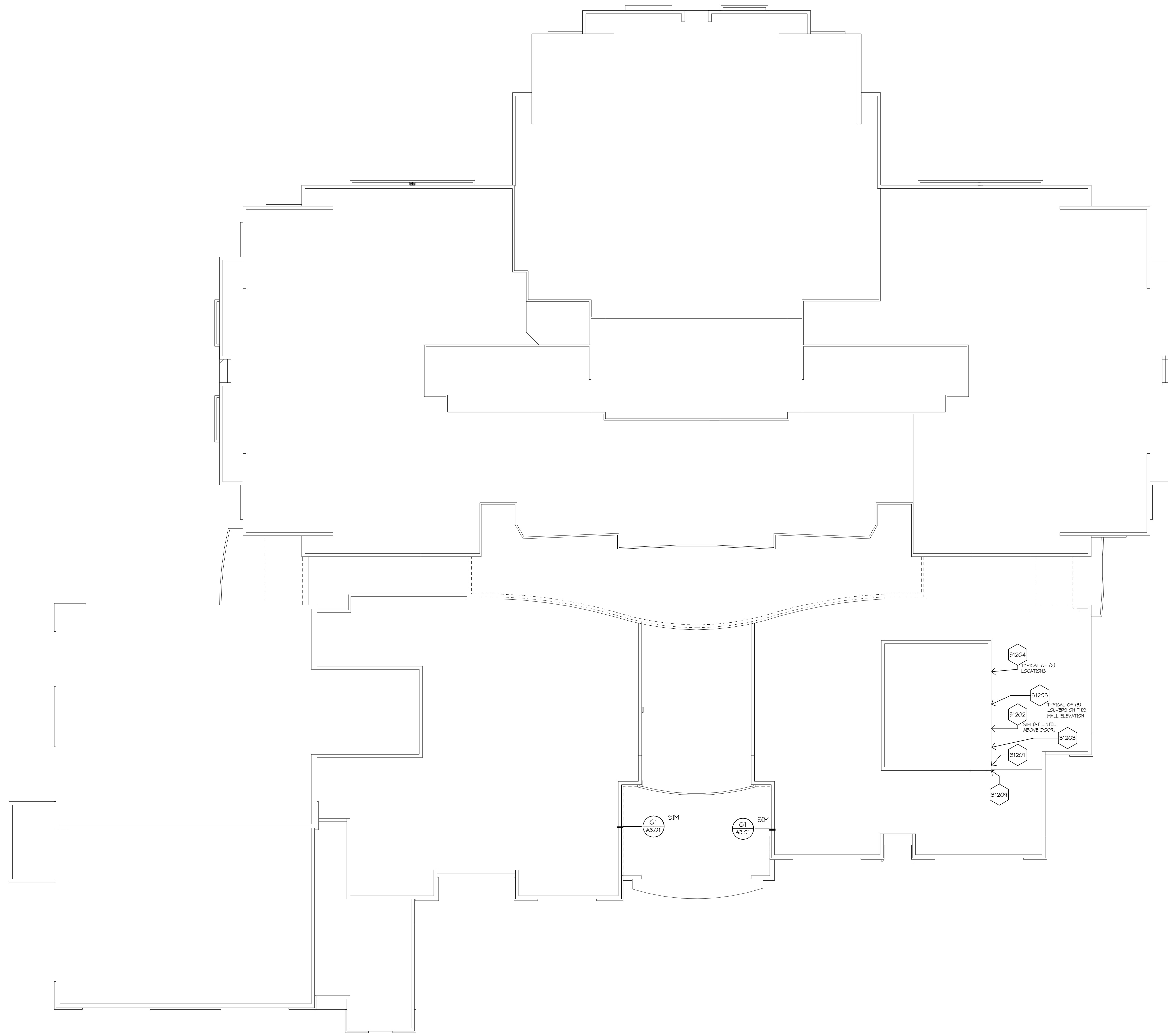
**MASONRY AND FLASHING
REPAIRS AT: HUNTLEY
HIGH SCHOOL,
HEINEMAN MIDDLE
SCHOOL, AND MARLOWE
MIDDLE SCHOOL**

**HUNTLEY COMMUNITY
SCHOOL DISTRICT #158**
650 Academic Drive
Algonquin, IL 60102



**architects
engineers**
www.woldae.com

110 North Brockway St. Tel: 847.241.6100
Two Hundred Twenty Palatine, IL 60067 Fax: 847.241.6105
mailto:woldae.com



F2 MARLOWE MIDDLE SCHOOL ROOF PLAN
1" = 20'-0"
0 15' 30'

GENERAL NOTES:

- 120V POWER AVAILABLE AT MULTIPLE POINTS ON ROOF. CONTRACTOR TO PROVIDE POWER GORDS AS REQUIRED.
- POTABLE WATER IS AVAILABLE AT MULTIPLE POINTS. CONTRACTOR TO PROVIDE HOSES AS REQUIRED.
- MASONRY VENEER UNITS TO BE REMOVED/REPLACED ARE TYPICALLY UTILITY SIZE BRICK.
- SEE ALSO EXTERIOR ELEVATION DRAWINGS FOR WORK AT EXTERIOR WALL OF THE BUILDING.

MIDDLE SCHOOL ROOF LEGEND

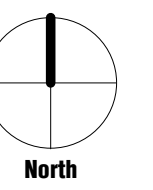
- DENOTES IMAGE INCLUDED WITHIN PROJECT MANUAL (AND WORK DESCRIBED THEREIN).
- DENOTES DETAIL OF CONSTRUCTION INCLUDED ON DRAWING SHEET.
- DENOTES THROUGH WALL FLASHING REPAIR WORK TO BE INCLUDED IN BASE BID. SEE TYPICAL DETAILS C1/A3.01 & D4/A3.01

I hereby certify that this plan, specification or report was prepared by me or under my direct supervision and that I am a duly Licensed ARCHITECT under the laws of the State of IL

Registration Number: TEDD STROHSKOLD 001-020603 Date: 4/8/2016

Description	Revisions		Date	Num

Comm: 163025
Date: 4/14/2016
Drawn: JRK
Check: TS



**MARLOWE MIDDLE
SCHOOL ROOF PLAN**

Scale: As indicated

A1.53

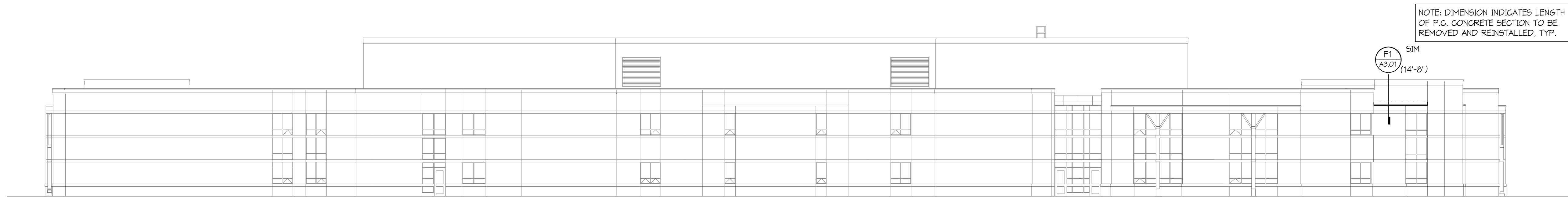
MASONRY AND FLASHING REPAIRS AT: HUNTLEY HIGH SCHOOL, HEINEMAN MIDDLE SCHOOL, AND MARLOWE MIDDLE SCHOOL

HUNTLEY COMMUNITY SCHOOL DISTRICT #158
650 Academic Drive
Algonquin, IL 60102

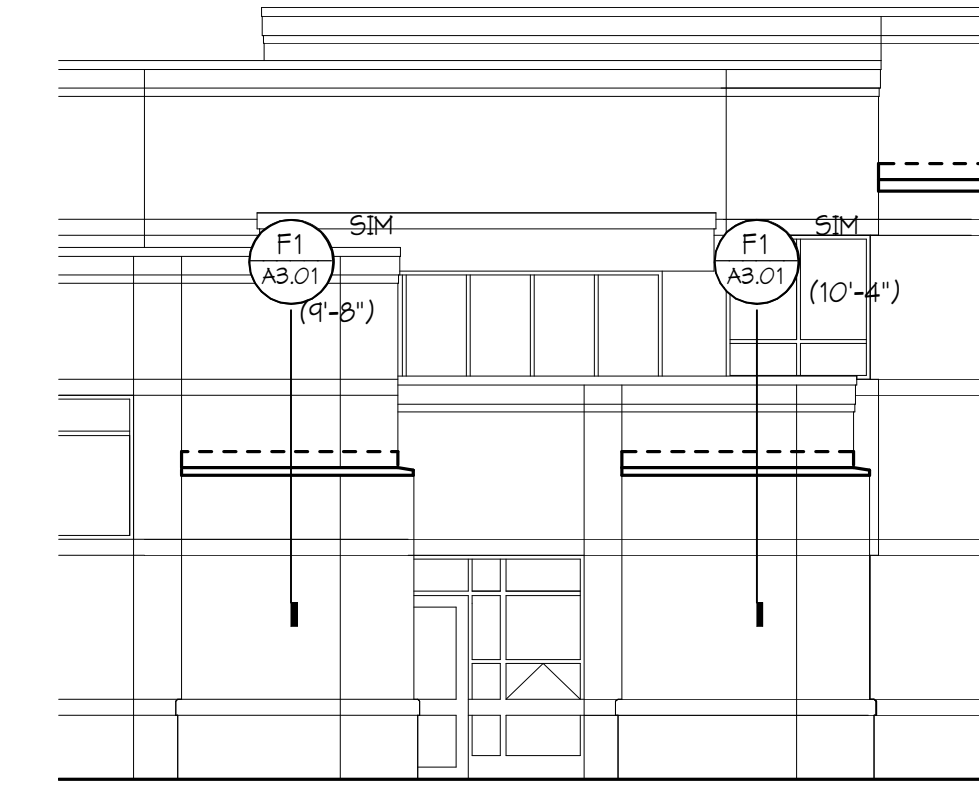


architects engineers
www.woldae.com

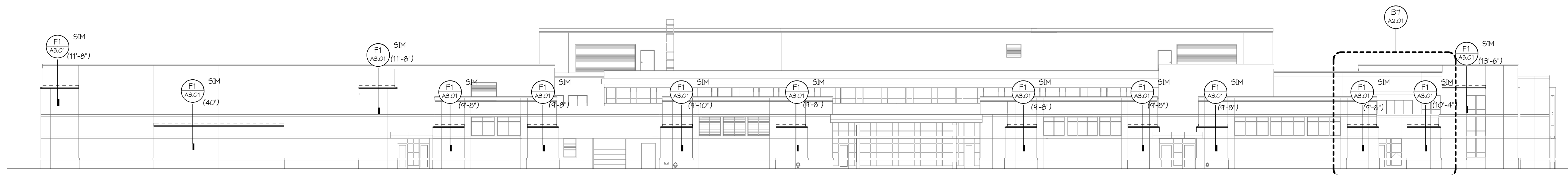
110 North Brockway St. Tel: 847.241.6100
Two Hundred Twenty Palatine, IL 60067 Fax: 847.241.6105
mailto:woldae.com



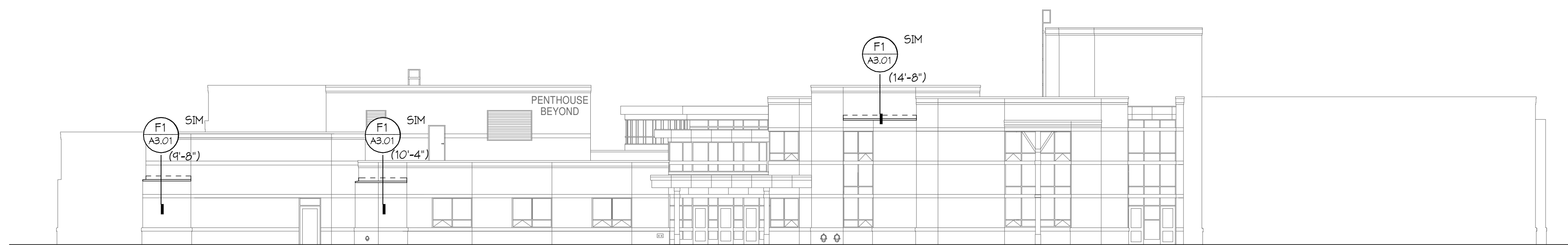
B1 EAST ELEVATION
1/16" = 1'-0"
0 12 24



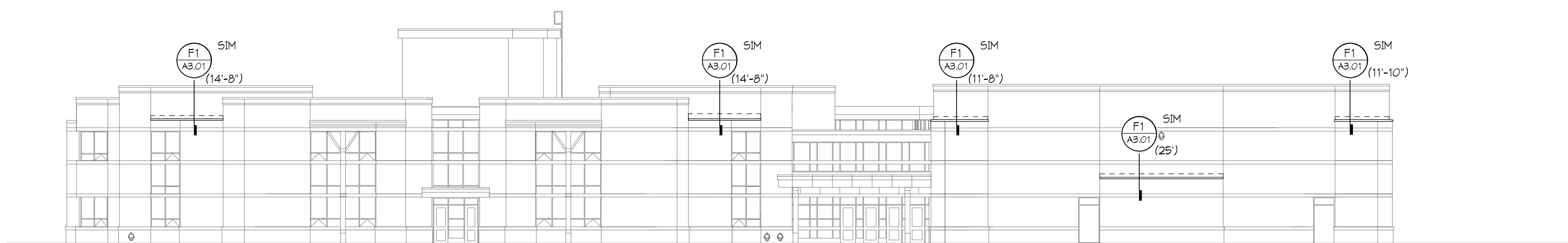
B7 ENLARGED ELEVATION, TYP.
1/8" = 1'-0"
0 6 12



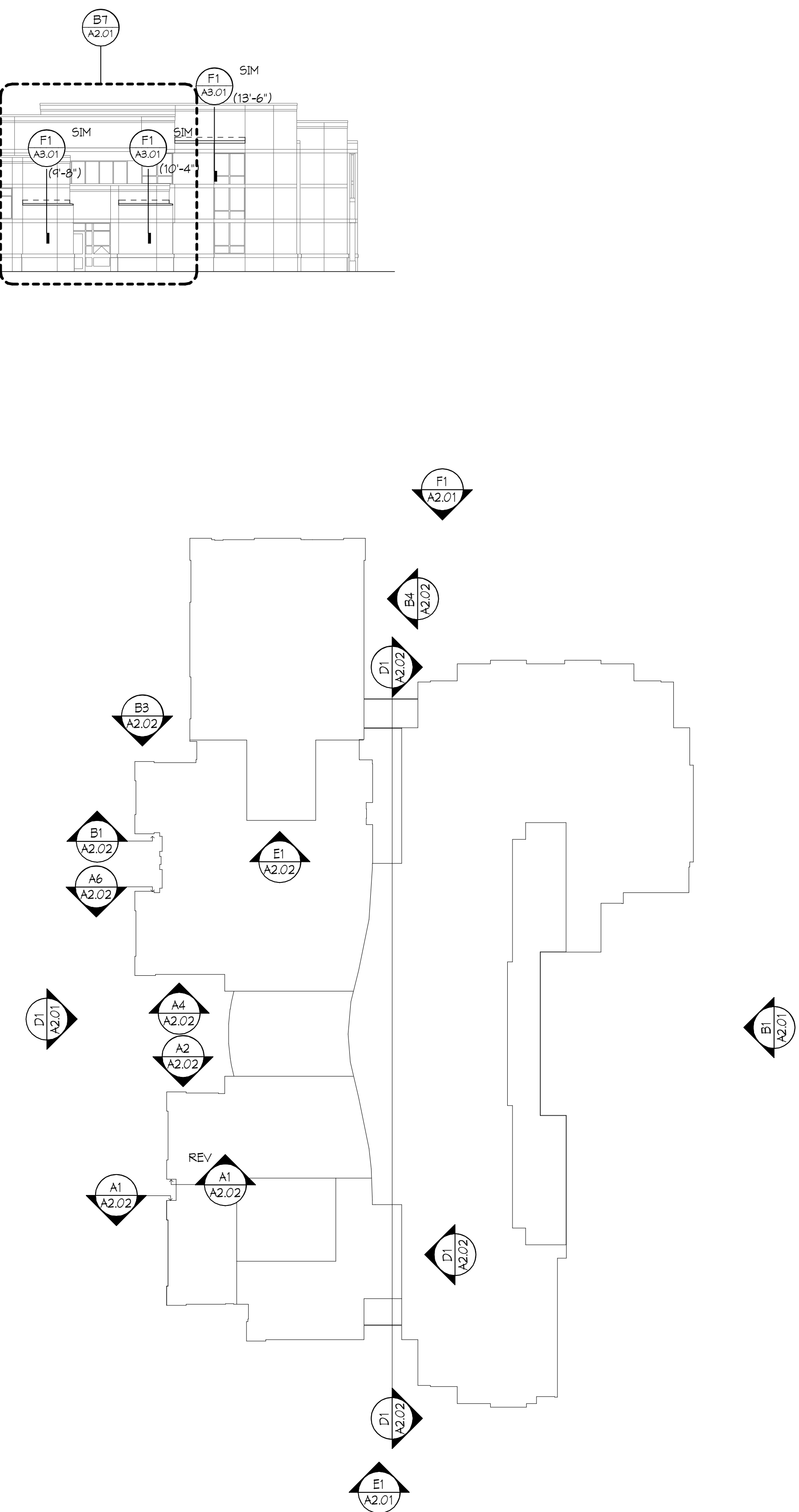
D1 WEST ELEVATION
1/16" = 1'-0"
0 12 24



E1 SOUTH ELEVATION
1/16" = 1'-0"
0 12 24



F1 NORTH ELEVATION
1/16" = 1'-0"
0 12 24



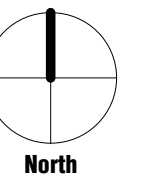
ELEVATION KEYPLAN

I hereby certify that this plan, specification or report was prepared by me or under my direct supervision and that I am a duly licensed ARCHITECT under the laws of the State of IL.

TEOD STROCHKOLD
Registration Number 001-020603 Date 4/8/2016

Revisions	Date	Rev

Client: 163025
Date: 4/14/2016
Drawn: JRC
Check: TS



HEINEMAN MIDDLE SCHOOL - EXTERIOR ELEVATIONS

Scale: As indicated

A2.01

**MASONRY AND FLASHING
REPAIRS AT: HUNTLEY
HIGH SCHOOL,
HEINEMAN MIDDLE
SCHOOL, AND MARLOWE
MIDDLE SCHOOL**

**HUNTLEY COMMUNITY
SCHOOL DISTRICT #158**
650 Academic Drive
Algonquin, IL 60102



**architects
engineers**
www.woldae.com

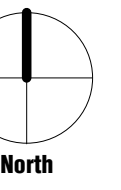
110 North Brockway St. Tel: 847.241.6100
Two Hundred Twenty Two Palatine, IL 60067 Fax: 847.241.6105
mail@woldae.com

I hereby certify that this plan, specification or report was prepared by me or under my direct supervision and that I am a duly licensed ARCHITECT under the laws of the State of IL.

TEOD STROCHKOLD
Registration Number 001-020603 Date 4/8/2016

Revisions	Date	Num

Comm: 163025
Date: 4/14/2016
Drawn: Author
Check: Checker



**HEINEMAN MIDDLE
SCHOOL- EXTERIOR
ELEVATIONS**

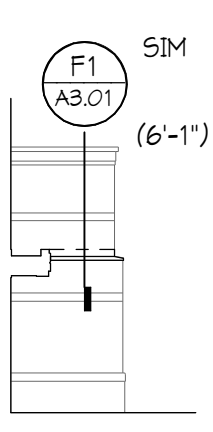
Scale: As indicated

A2.02

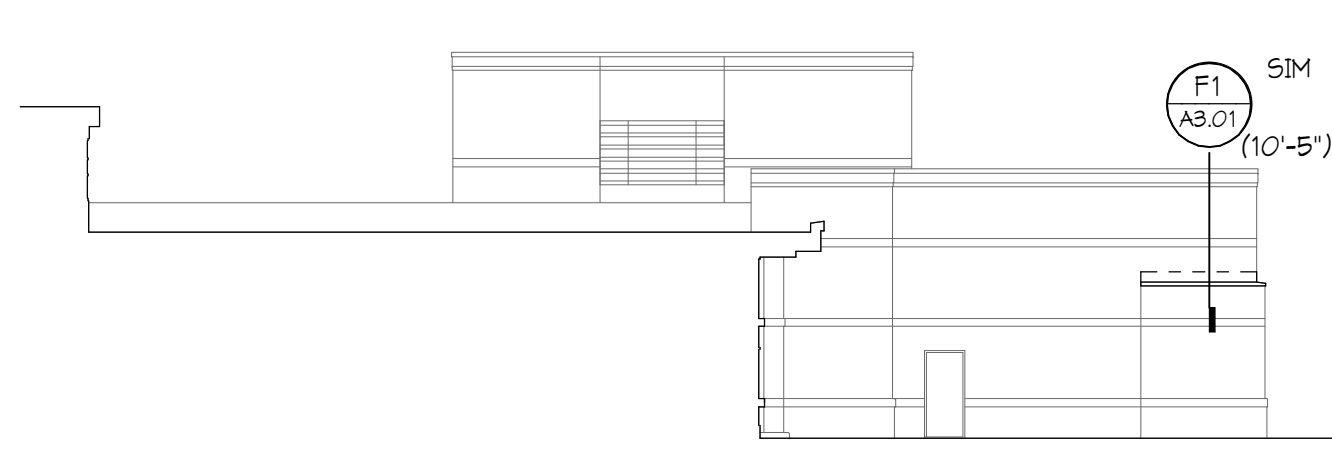
NOTE: DIMENSION INDICATES LENGTH OF P.C. CONCRETE SECTION TO BE REMOVED AND REINSTALLED, TYP.



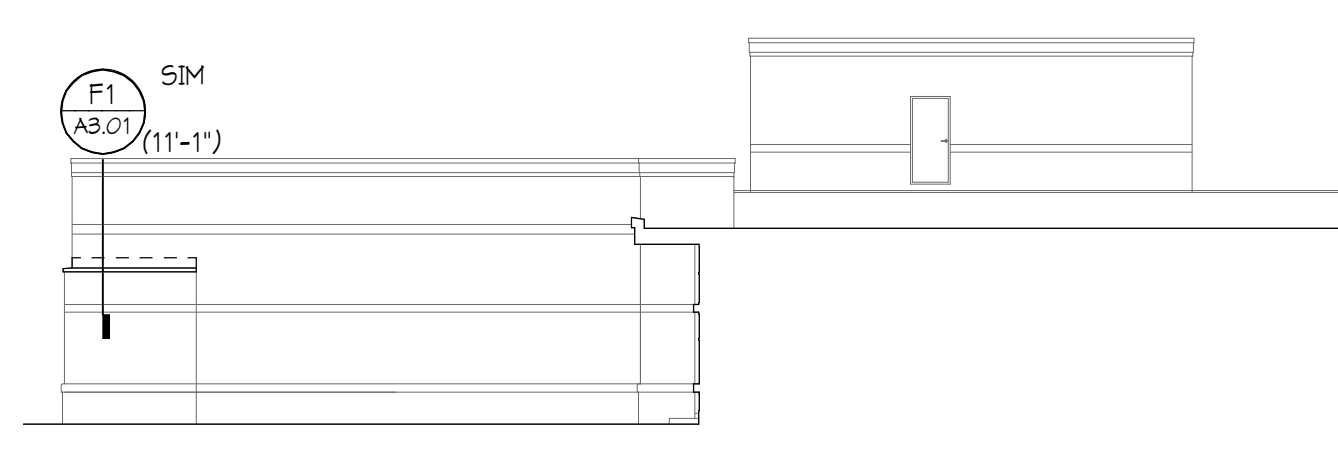
A1 PARTIAL ELEVATION
1/16" = 1'-0"
0 12' 24'



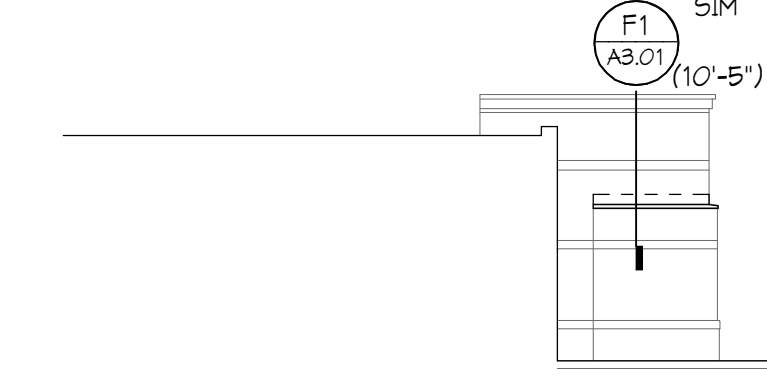
A2 PARTIAL ELEVATION
1/16" = 1'-0"
0 12' 24'



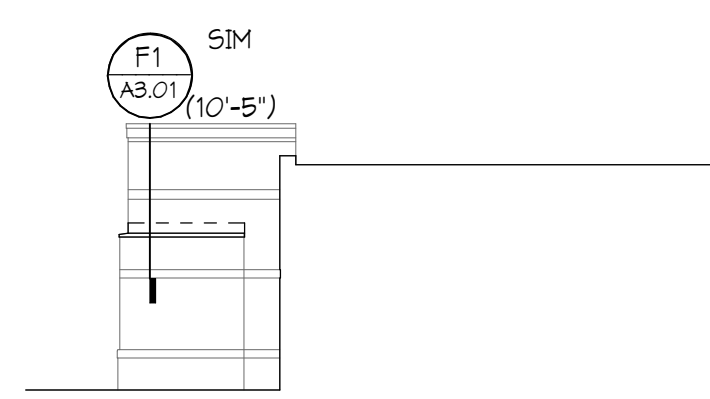
A4 PARTIAL ELEVATION
1/16" = 1'-0"
0 12' 24'



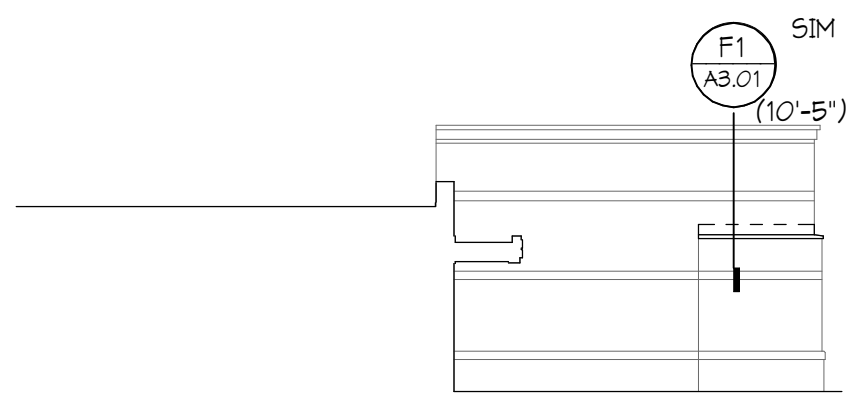
A6 PARTIAL ELEVATION
1/16" = 1'-0"
0 12' 24'



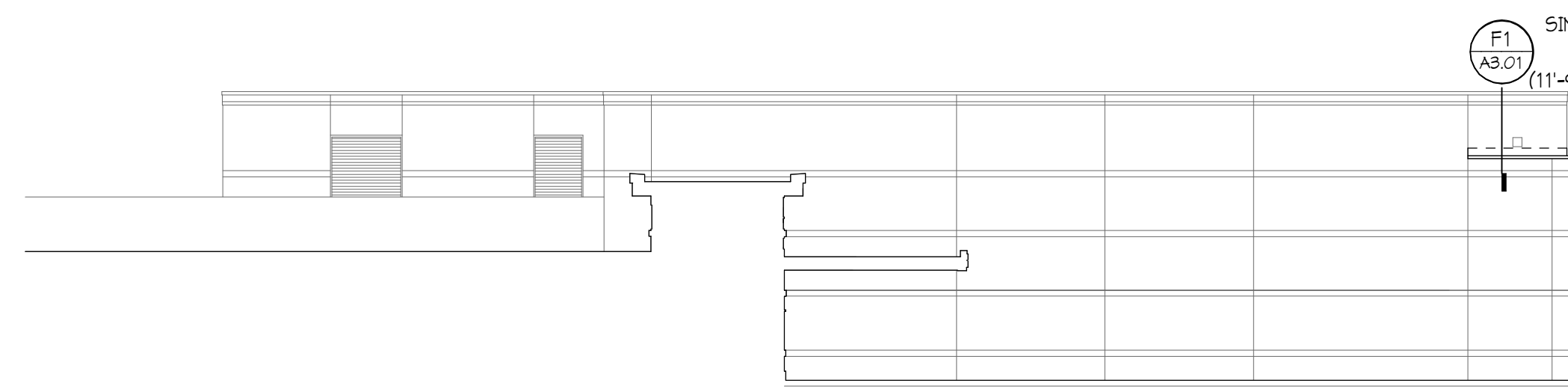
B1 PARTIAL ELEVATION
1/16" = 1'-0"
0 12' 24'



B3 PARTIAL ELEVATION
1/16" = 1'-0"
0 12' 24'



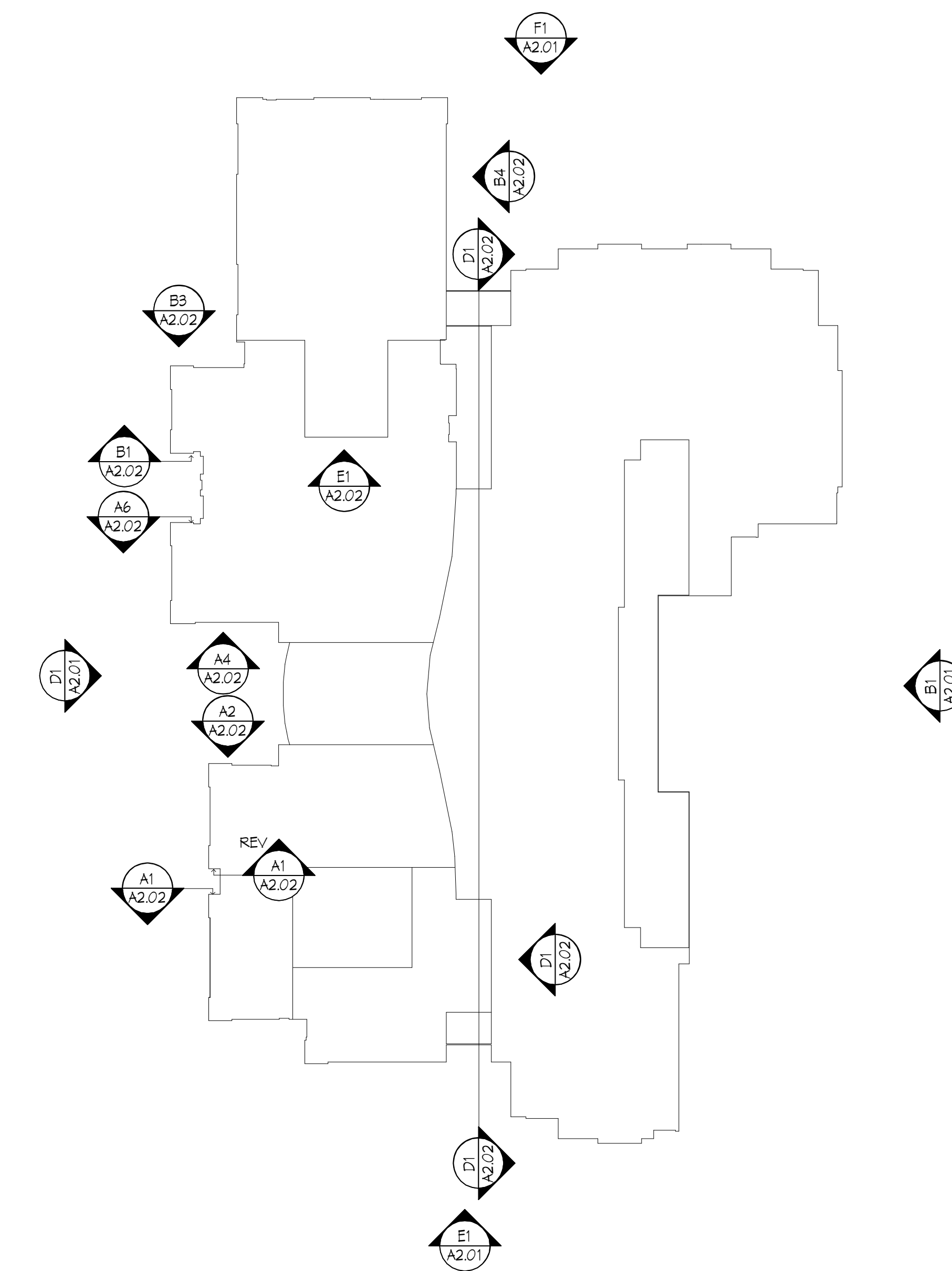
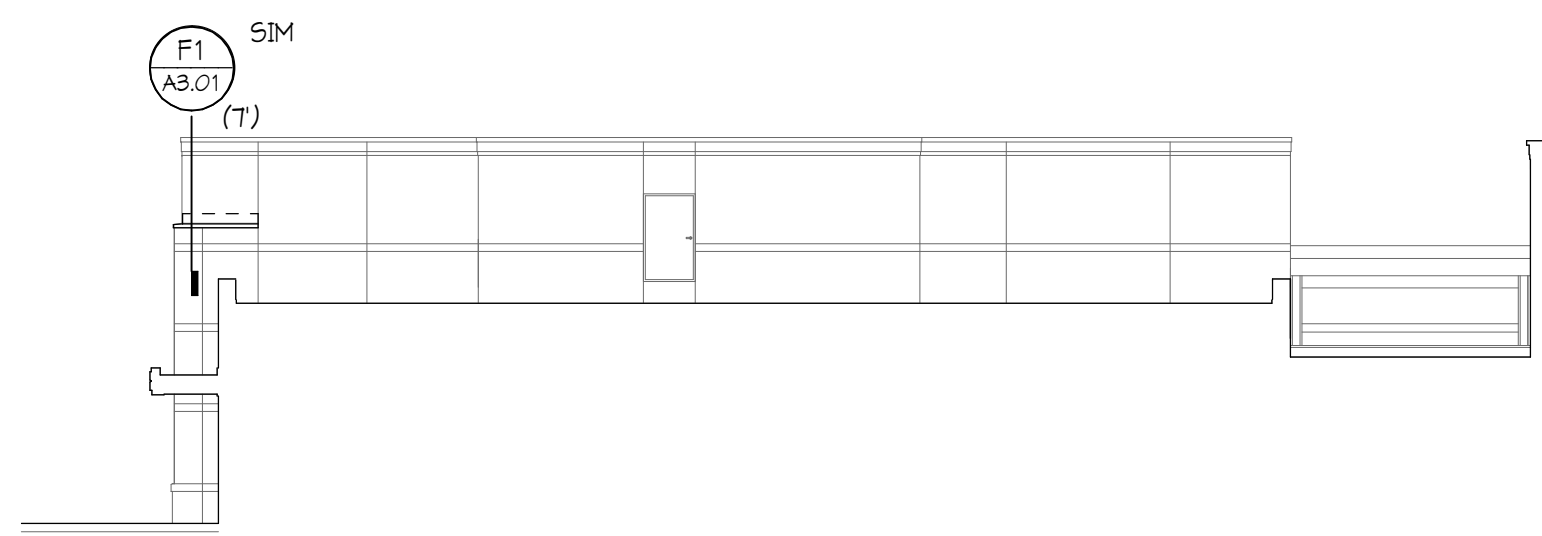
B4 PARTIAL ELEVATION
1/16" = 1'-0"
0 12' 24'



D1 PARTIAL ELEVATION
1/16" = 1'-0"
0 12' 24'



E1 PARTIAL ELEVATION
1/16" = 1'-0"
0 12' 24'



ELEVATION KEYPLAN

IL

A

Copyright © 2016 Wold Architects Engineers, Inc. All rights reserved. No part of this document may be reproduced without the written permission of Wold Architects Engineers, Inc.

**MASONRY AND FLASHING
REPAIRS AT: HUNTLEY
HIGH SCHOOL,
HEINEMAN MIDDLE
SCHOOL, AND MARLOWE
MIDDLE SCHOOL**

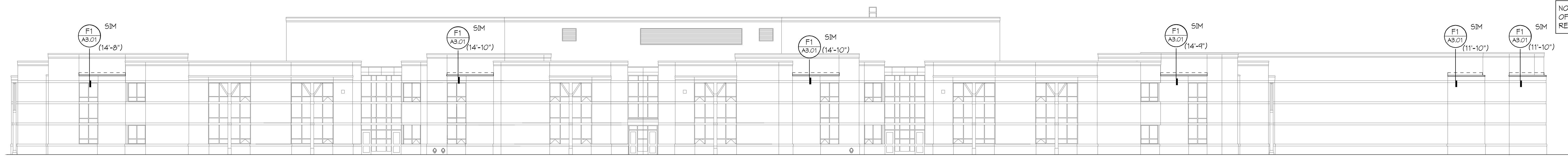
**HUNTLEY COMMUNITY
SCHOOL DISTRICT #158**
650 Academic Drive
Algonquin, IL 60102



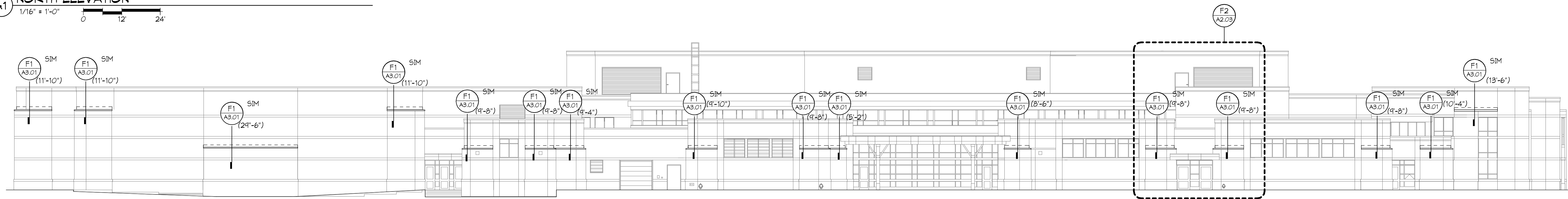
**architects
engineers**
www.woldae.com

110 North Brockway St. Tel: 847.241.6100
Two Hundred Twenty Tax: 847.241.6105
Palatine, IL 60067 Mail: woldae.com

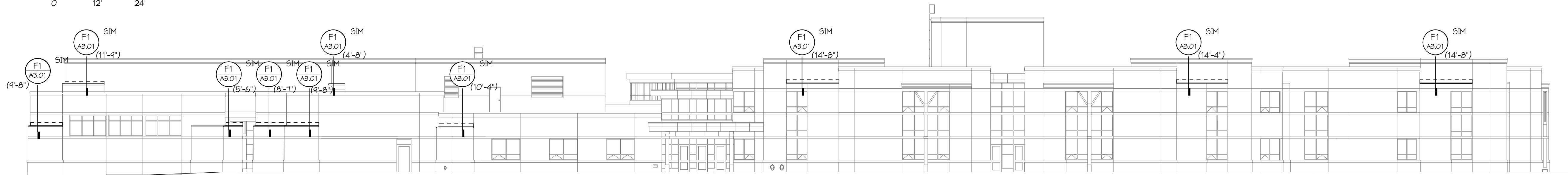
NOTE: DIMENSION INDICATES LENGTH
OF P.C. CONCRETE SECTION TO BE
REMOVED AND REINSTALLED, TYP.



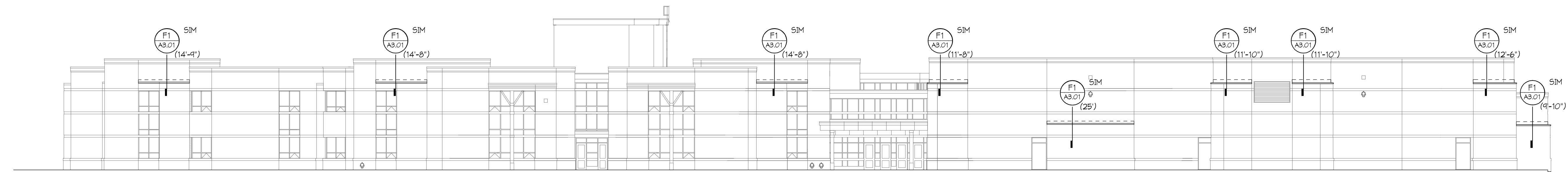
A1 NORTH ELEVATION
1/16" = 1'-0"



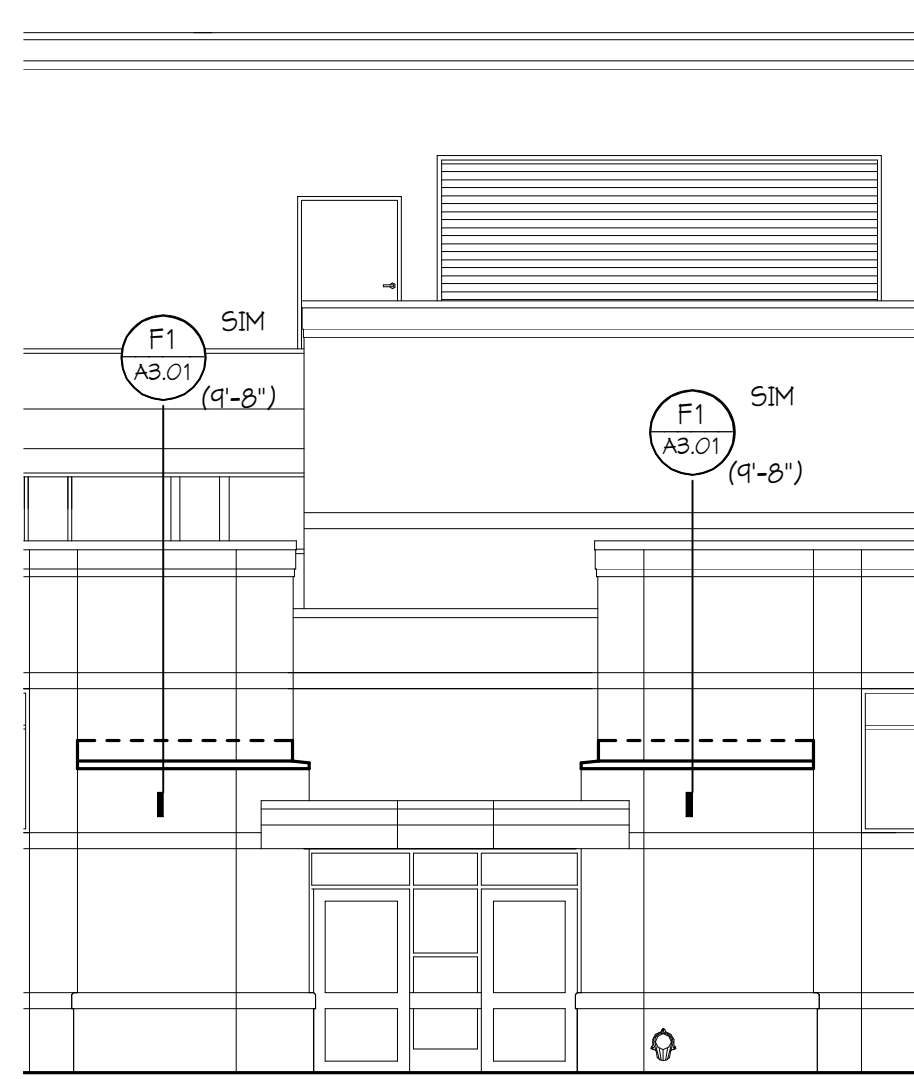
B1 SOUTH ELEVATION
1/16" = 1'-0"



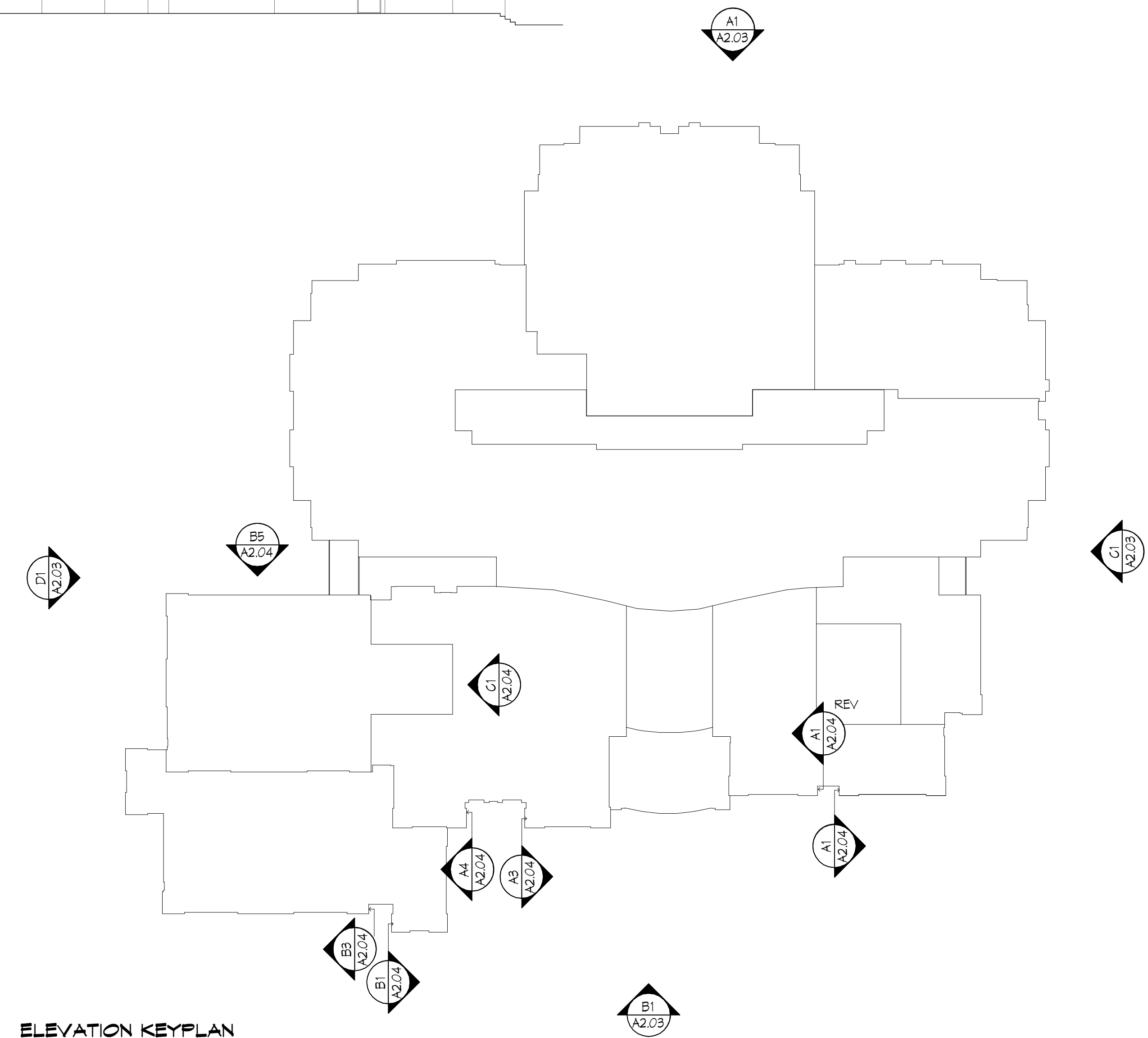
C1 EAST ELEVATION
1/16" = 1'-0"



D1 WEST ELEVATION
1/16" = 1'-0"



F2 ENLARGED ELEVATION, TYP.
1/8" = 1'-0"



ELEVATION KEYPLAN

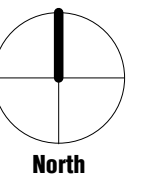
KEYPLAN

I hereby certify that this plan, specification or report was prepared by
me or under my direct supervision and that I am a duly licensed
ARCHITECT
under the laws of the State of
IL

TEOD STROHSKOLD
Registration Number 001-020603 Date 4/8/2016

Description	Revisions	Date	Rev

Comm: 163025
Date: 4/14/2016
Drawn: JRK
Check: TS



**MARLOWE MIDDLE
SCHOOL- EXTERIOR
ELEVATIONS**

Scale: As indicated

A2.03

Copyright © 2016 Wold Architects Engineers, Inc. All rights reserved. No part of this document may be reproduced without written permission from Wold Architects Engineers, Inc.

A

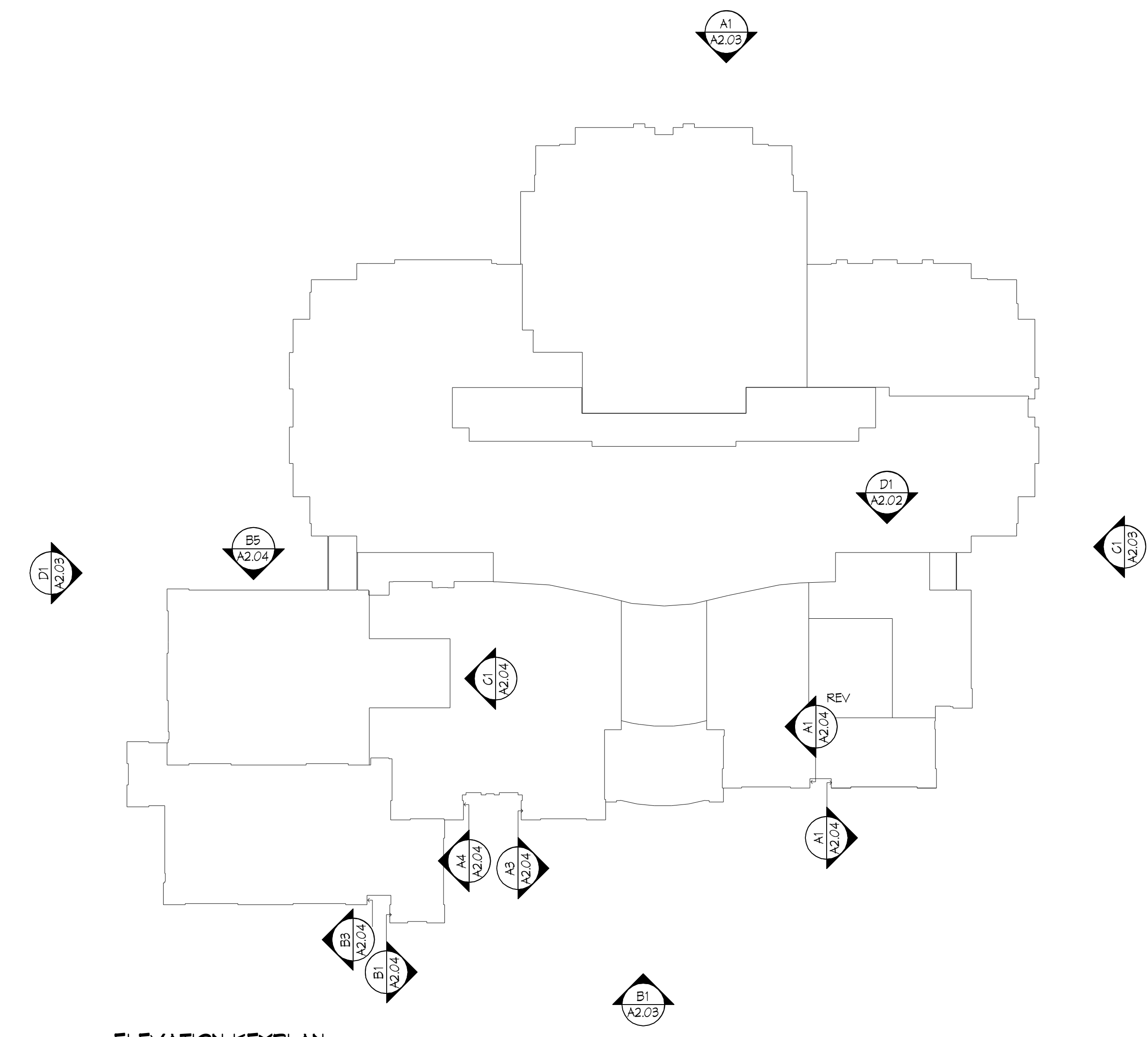
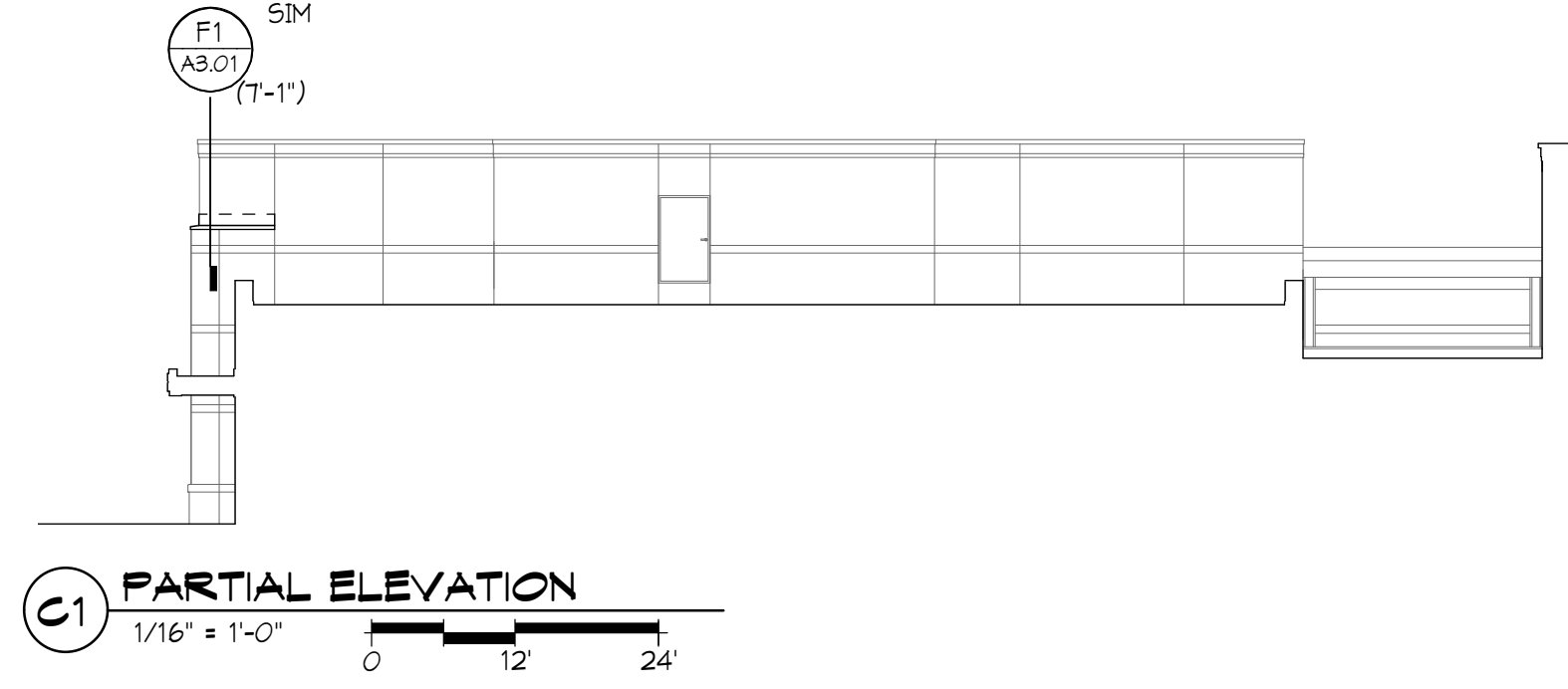
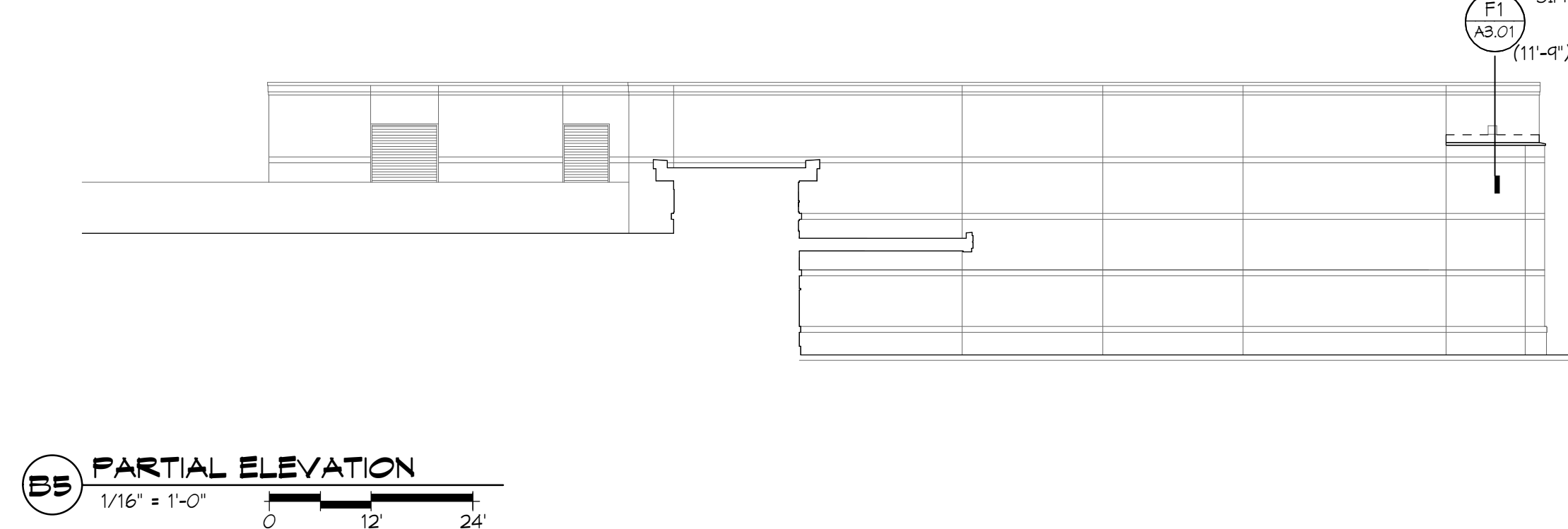
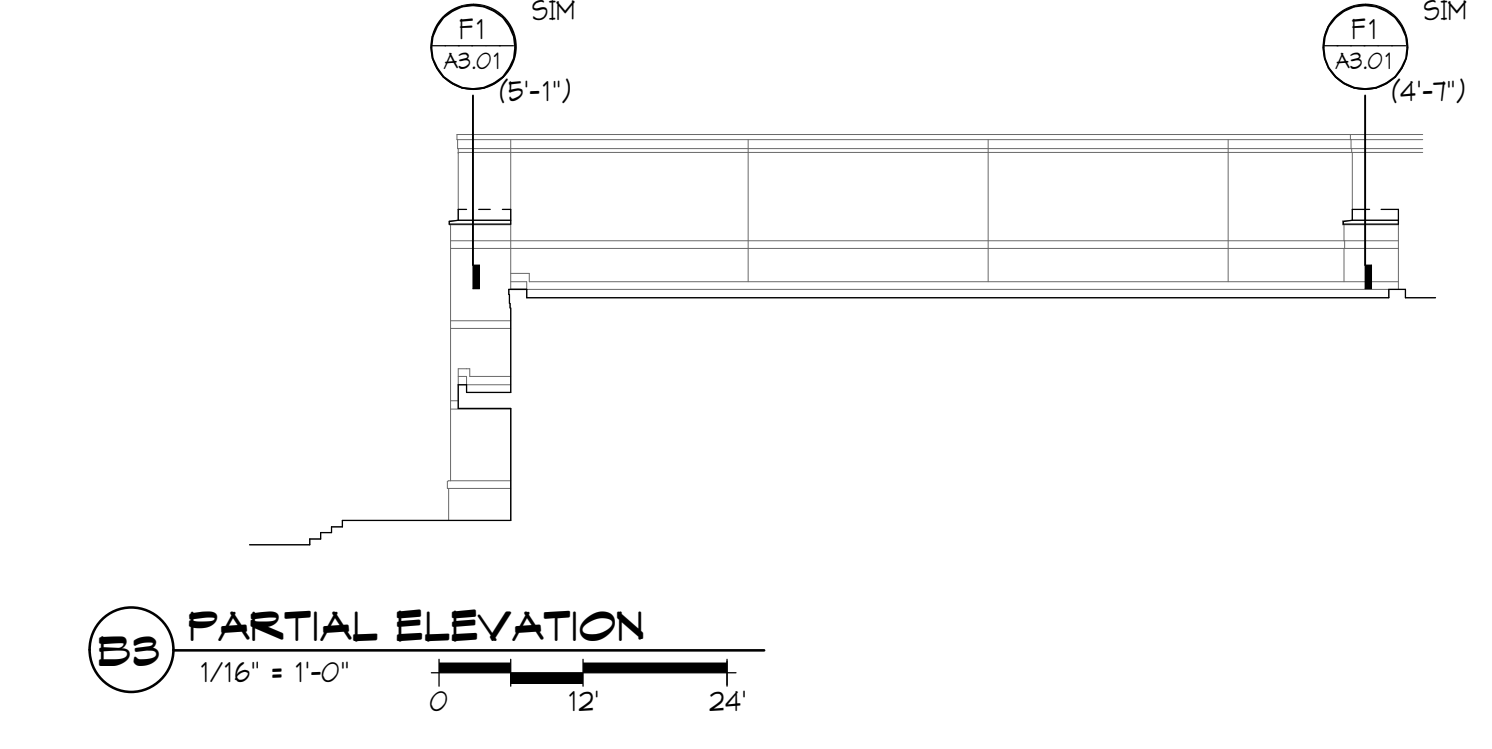
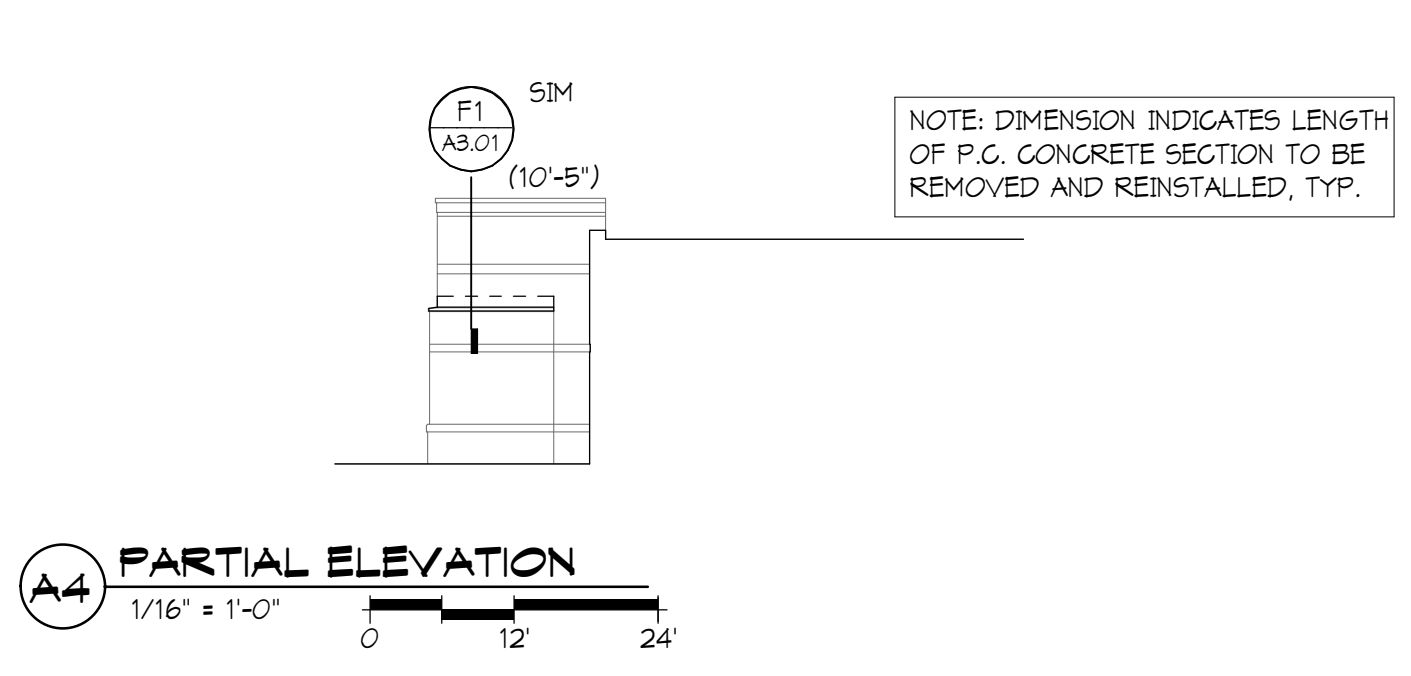
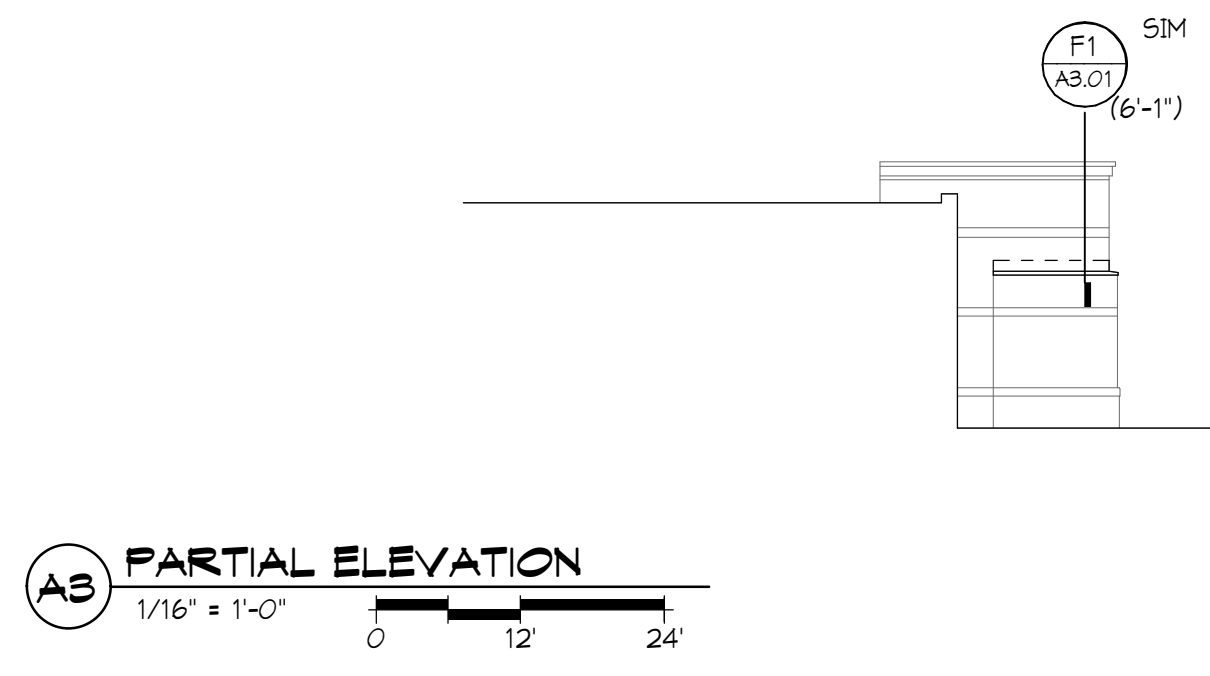
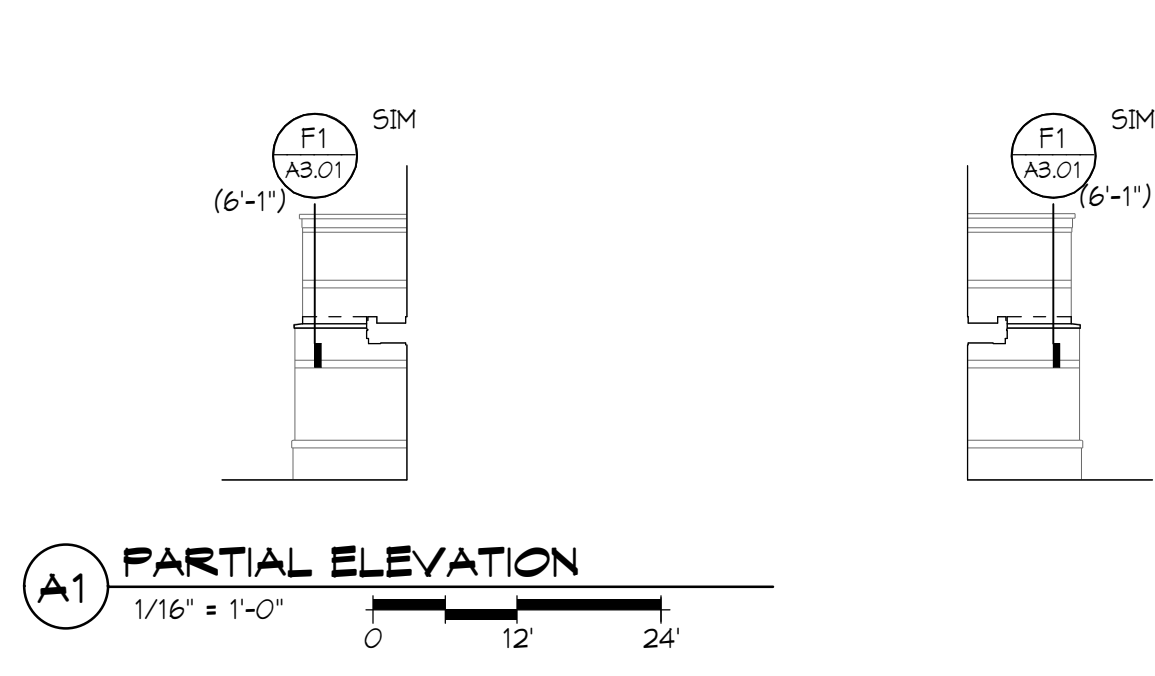
**MASONRY AND FLASHING
REPAIRS AT: HUNTLEY
HIGH SCHOOL,
HEINEMAN MIDDLE
SCHOOL, AND MARLOWE
MIDDLE SCHOOL**

**HUNTLEY COMMUNITY
SCHOOL DISTRICT #158**
650 Academic Drive
Algonquin, IL 60102



**architects
engineers**
www.woldae.com

110 North Brockway St. Tel: 847.241.6100
Two Hundred Twenty Tax: 847.241.6105
Palatine, IL 60067 Mail: woldae.com



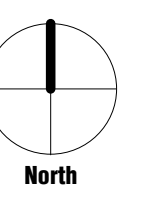
ELEVATION KEYPLAN

I hereby certify that this plan, specification or report was prepared by me or under my direct supervision and that I am a duly licensed ARCHITECT under the laws of the State of IL.

TEDD STROHSKOLD
Registration Number: 001-020603 Date: 4/8/2016

Description	Revisions	Date	Rev

Comm: 163025
Date: 4/14/2016
Drawn: JRK
Check: TS



**MARLOWE MIDDLE
SCHOOL - EXTERIOR
ELEVATIONS**

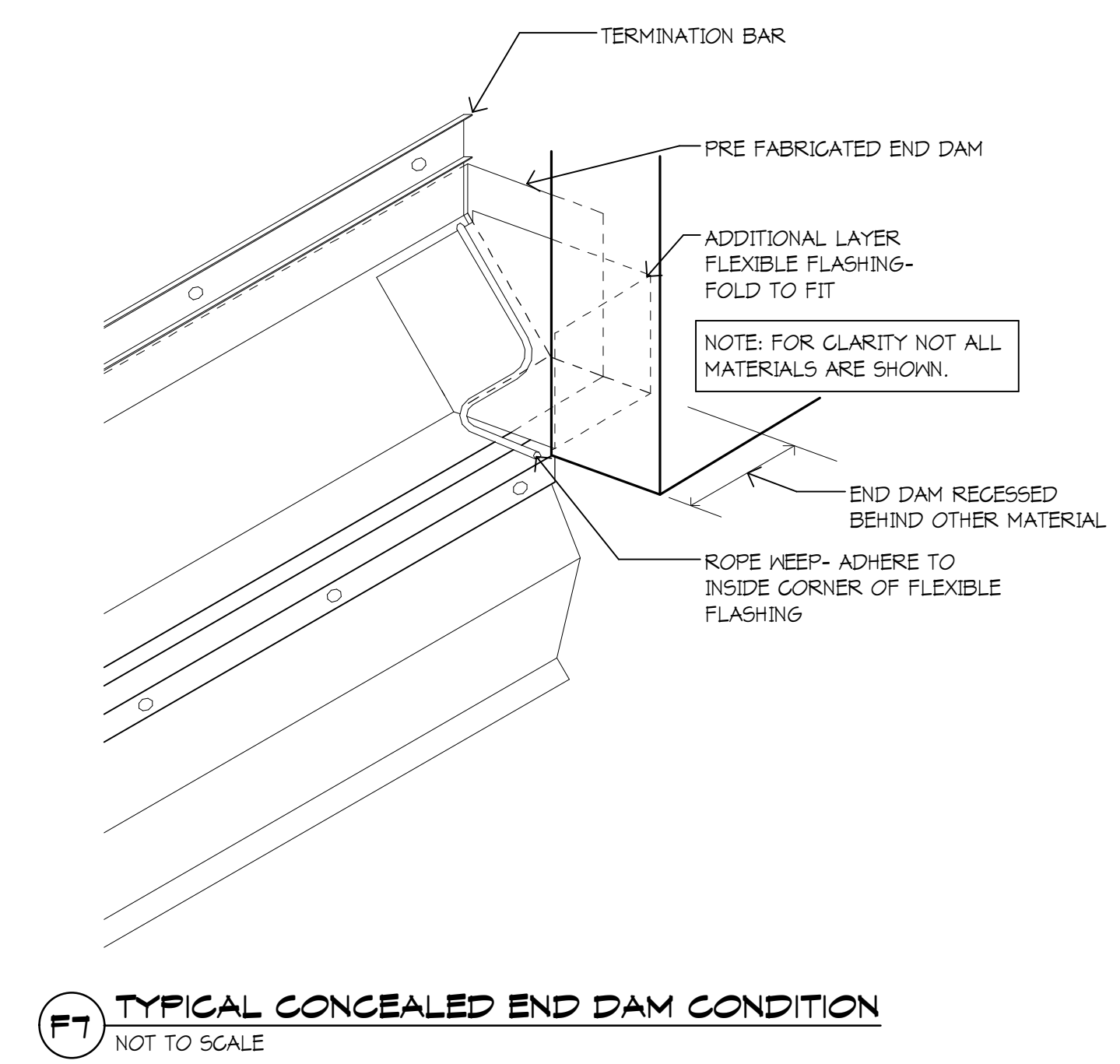
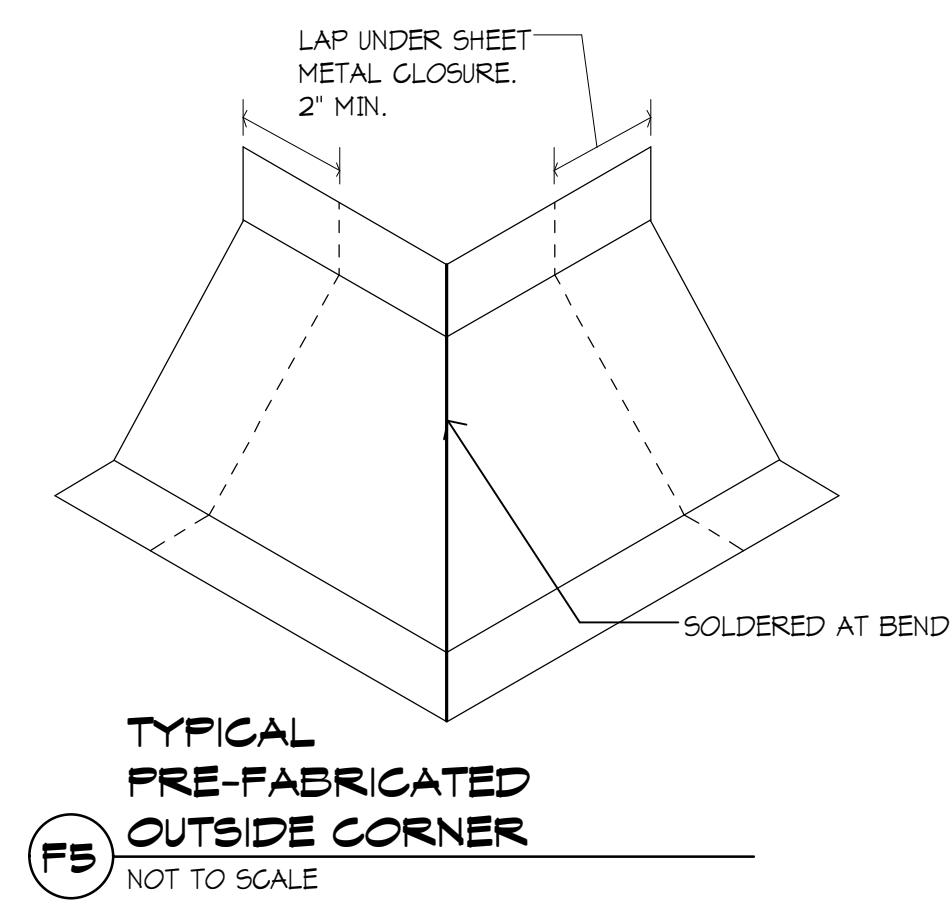
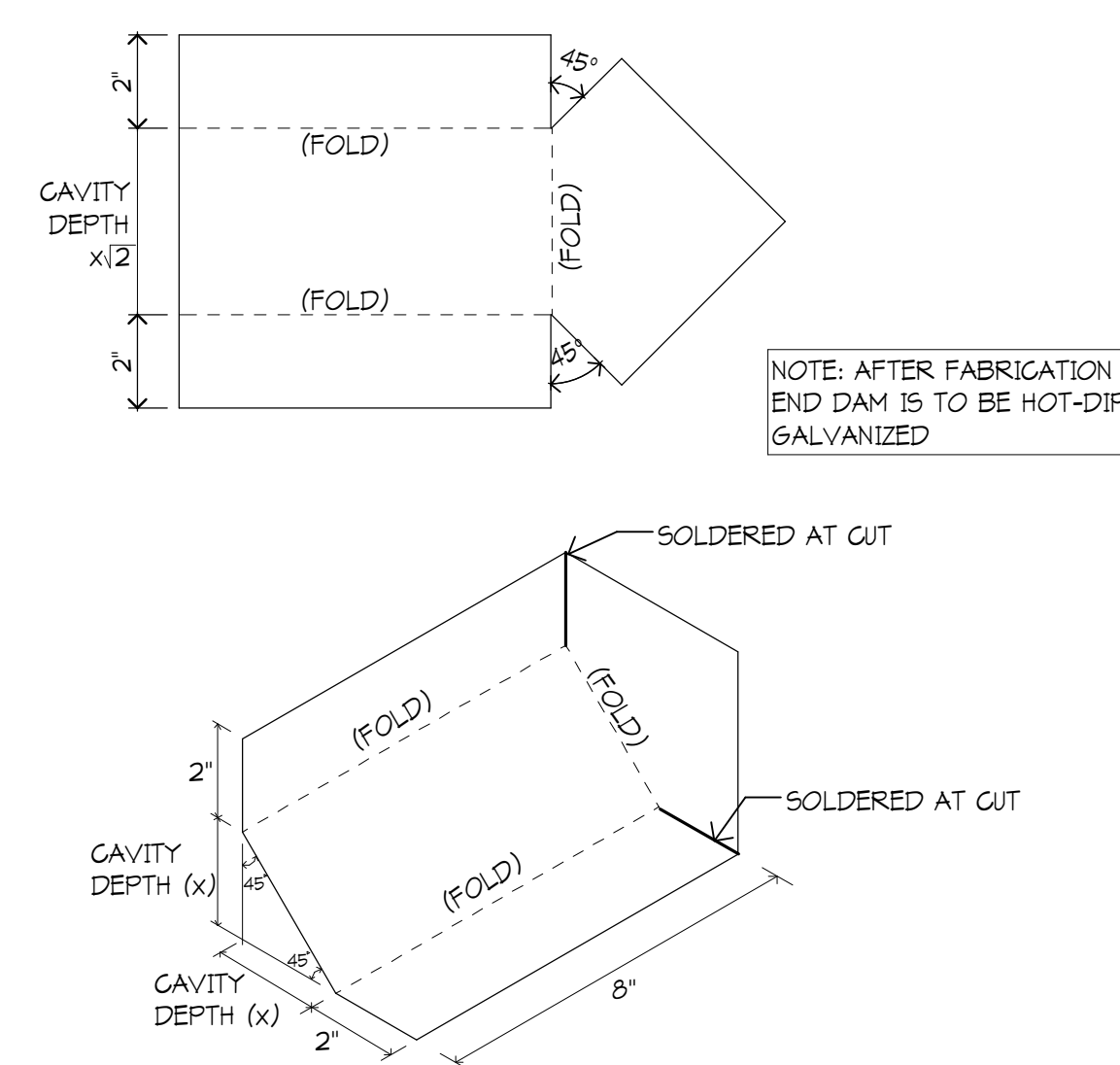
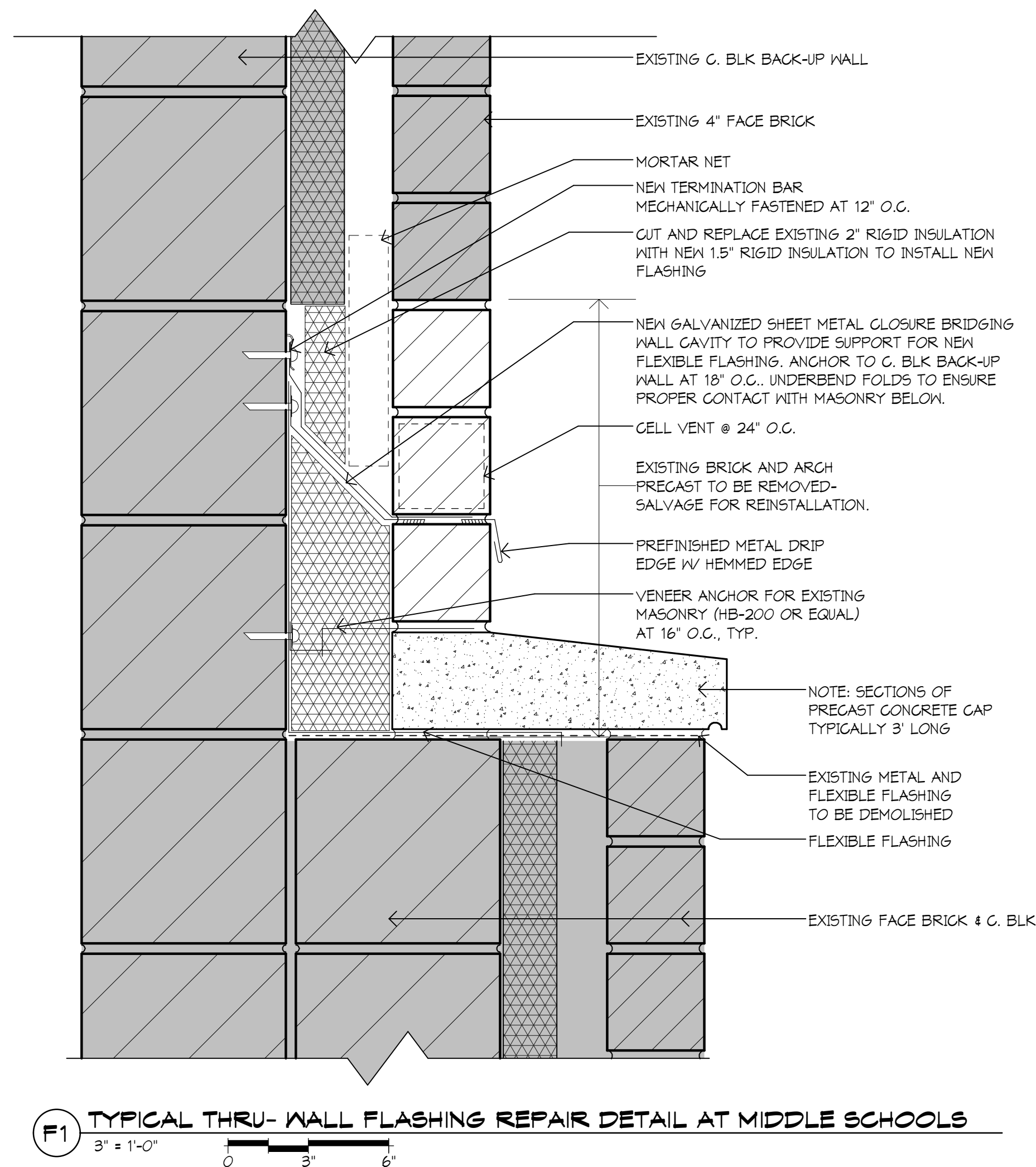
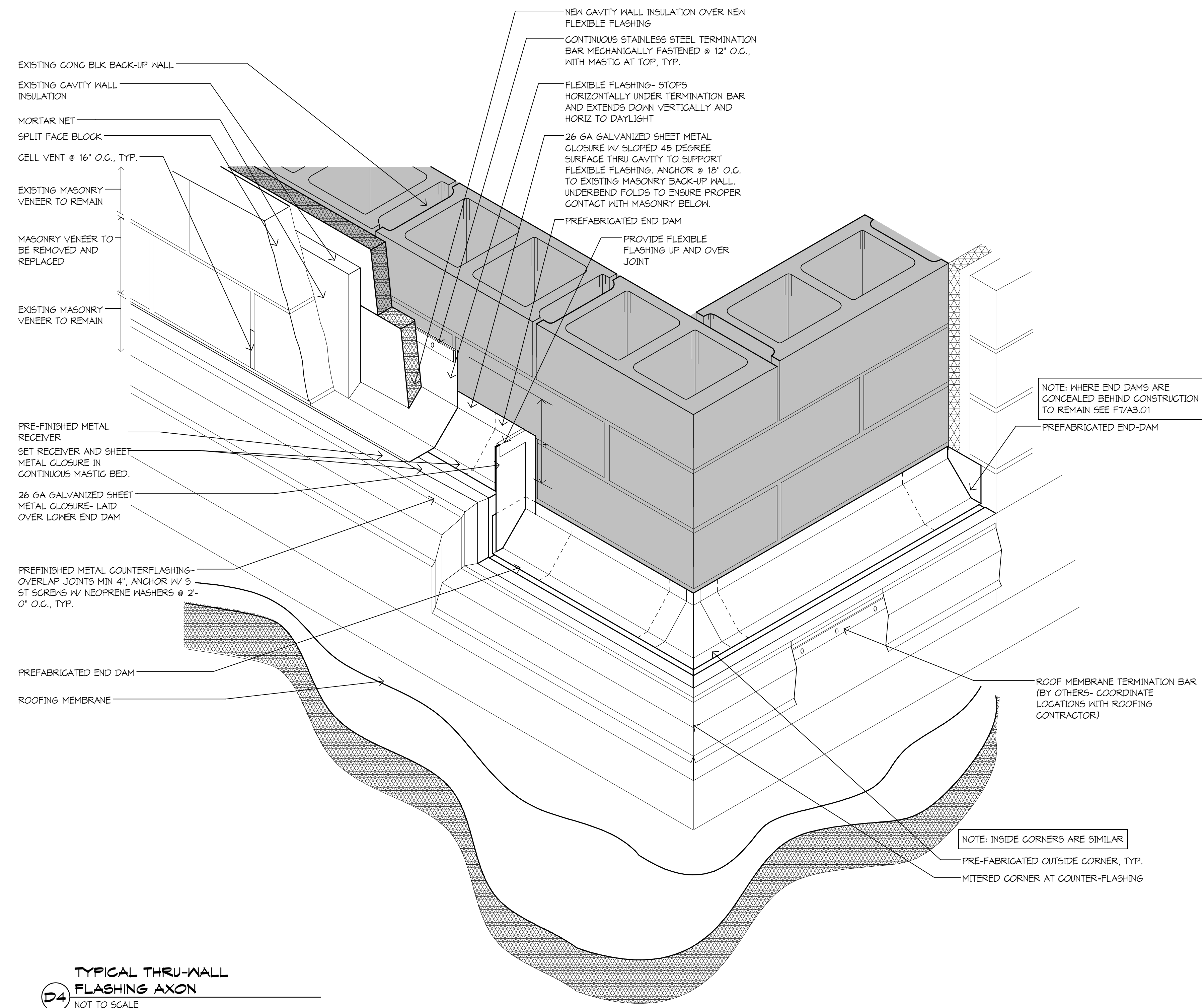
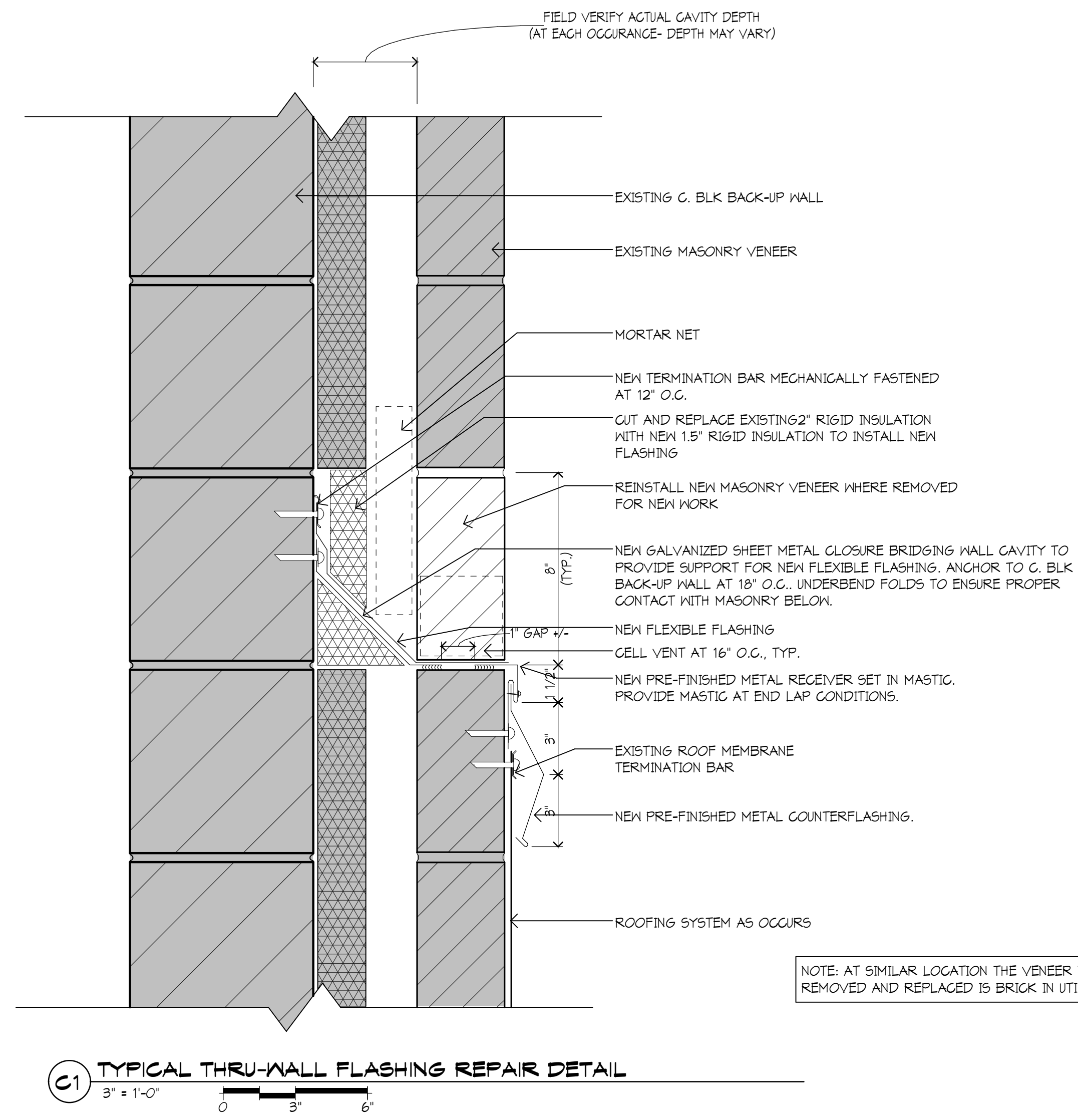
Scale: As indicated

A2.04

IL

A

Copyright © 2016 Wold Architects Engineers, Inc. All rights reserved. No part of this document may be reproduced without written permission from Wold Architects Engineers, Inc.



I hereby certify that this plan, specification or report was prepared by me or under my direct supervision and that I am a duly licensed ARCHITECT under the laws of the State of IL.

TEDD STROCHSHOLD
Registration Number 001-020603 Date 4/8/2016

Description	Revisions		
	Date	By	Rev

Comm: 163025
Date: 4/14/2016
Drawn: JRK
Check: TS

TYPICAL DETAILS

Scale: As indicated