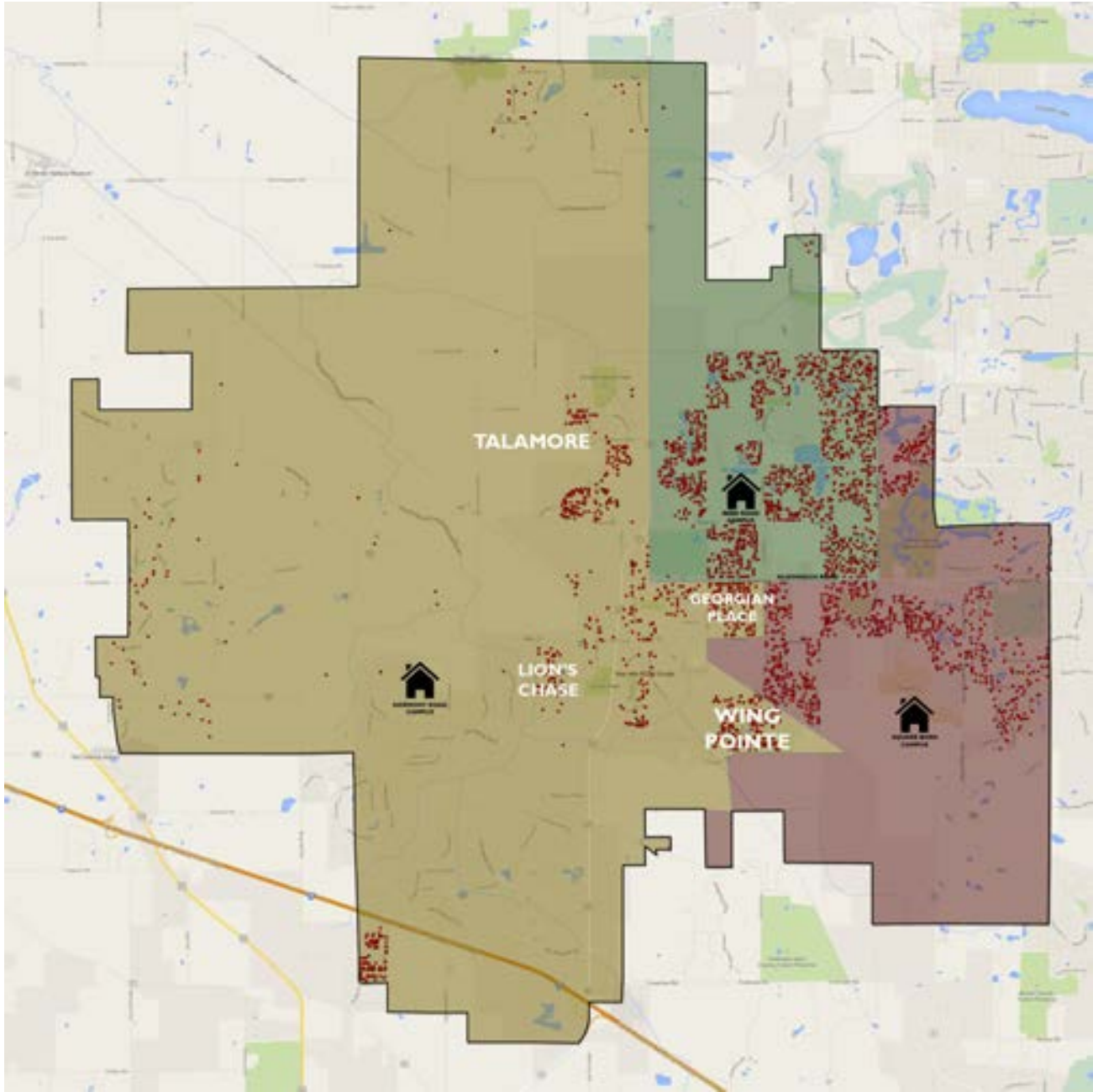


Boundary Change Scenario 3

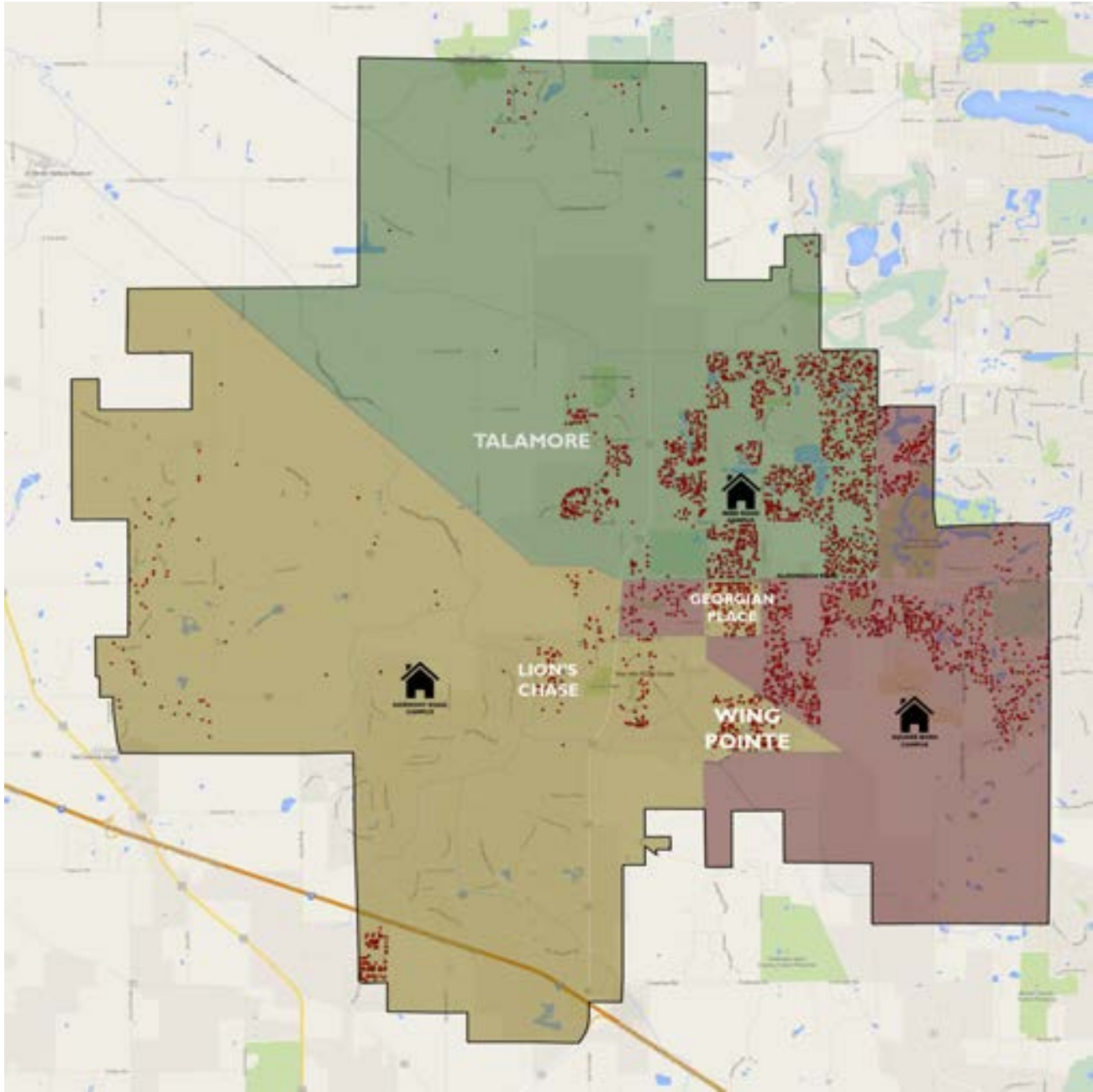


DECISIONINSITE

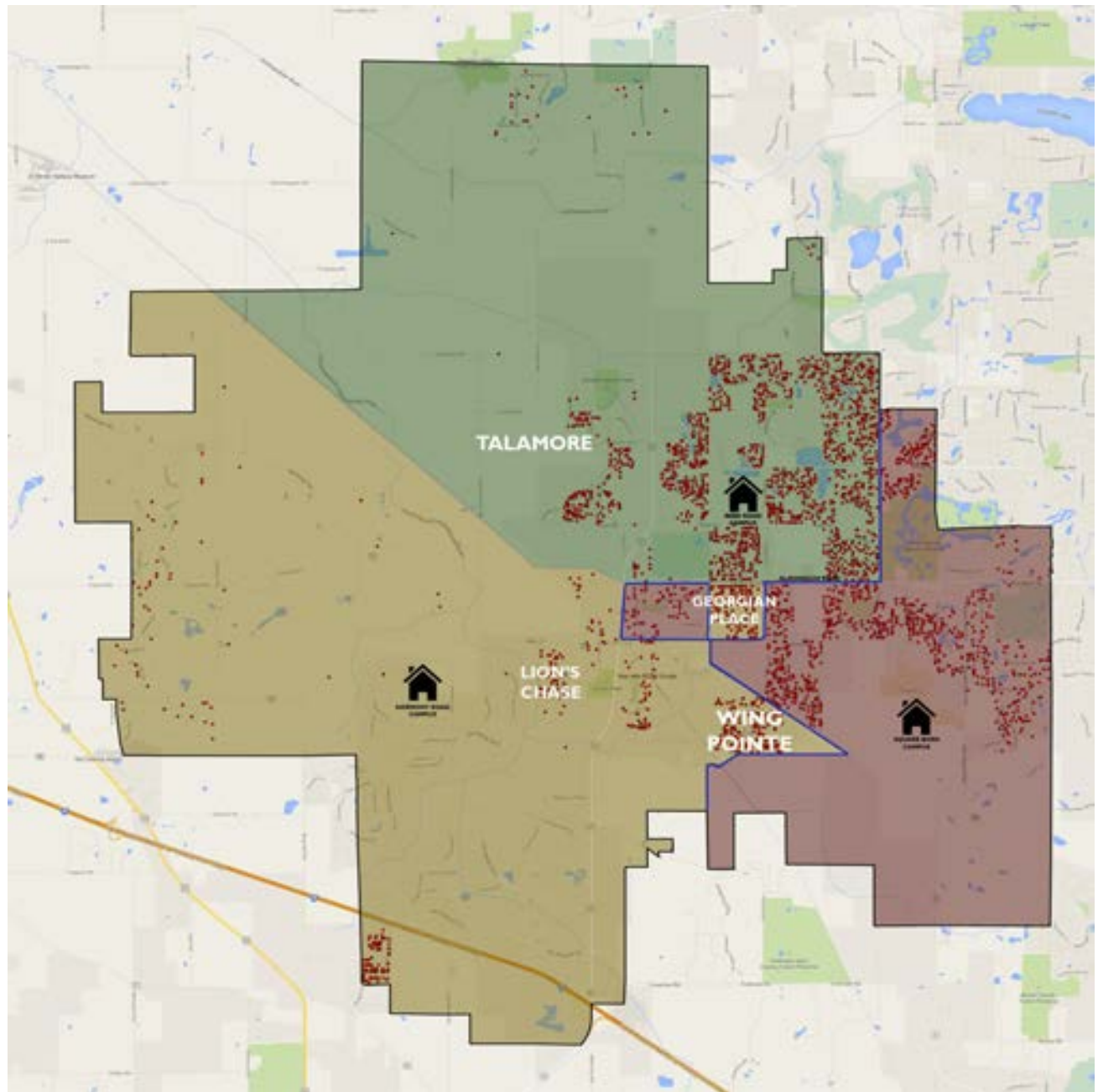
Current Elementary Boundaries



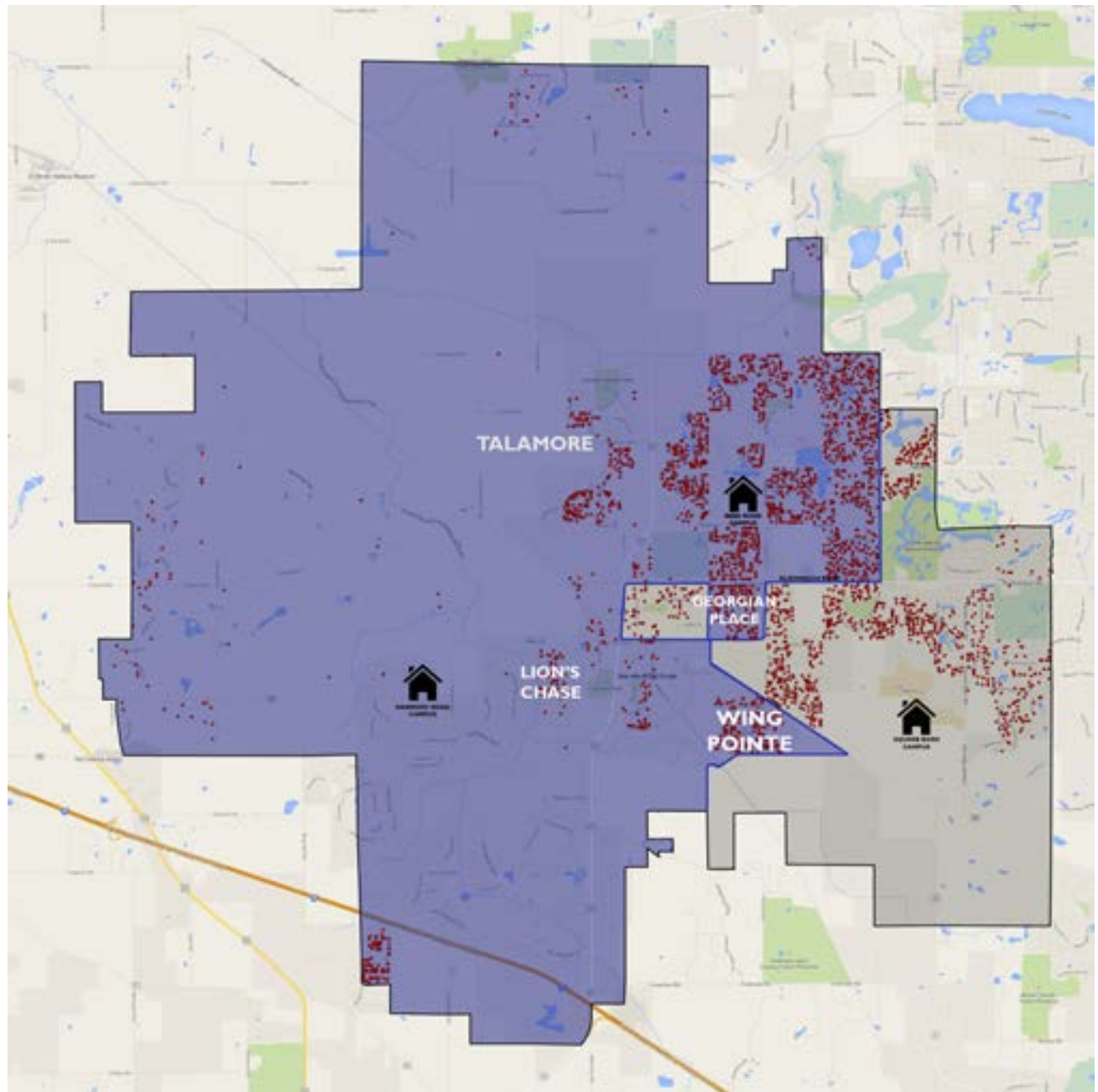
Scenario 3 Elementary Boundaries



Scenario 3
with
Middle
School
Boundaries



Scenario 3
with
Middle
School
Boundaries
Shaded



Scenario 3 Impact

Total number of K-5 students moved by 2017:

- Leggee to Chesak/Martin 374 K-5 students
- Leggee to Mackeben/Conley 77 K-5 students

Pros

- Provides immediate space relief to Leggee Elementary School

Cons

- Creates noncontiguous boundary areas, crisscrossing adjacent neighborhoods
- Would require splitting preschool between Chesak and Martin
- Divides Downtown Huntley neighborhood
- Creates more bus traffic across Route 47
- Would require a more aggressive phase-in