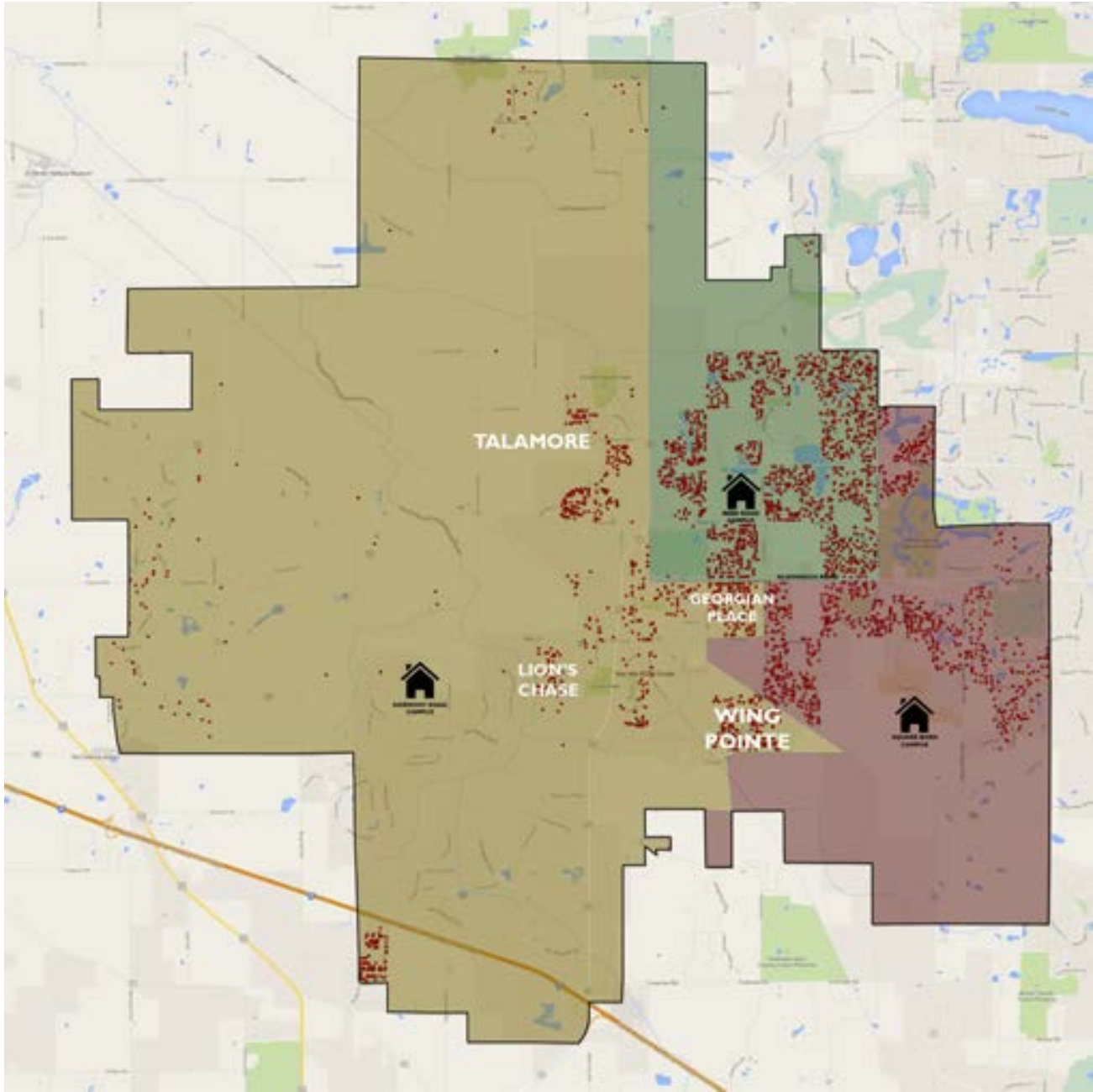


# Boundary Change Scenario 2

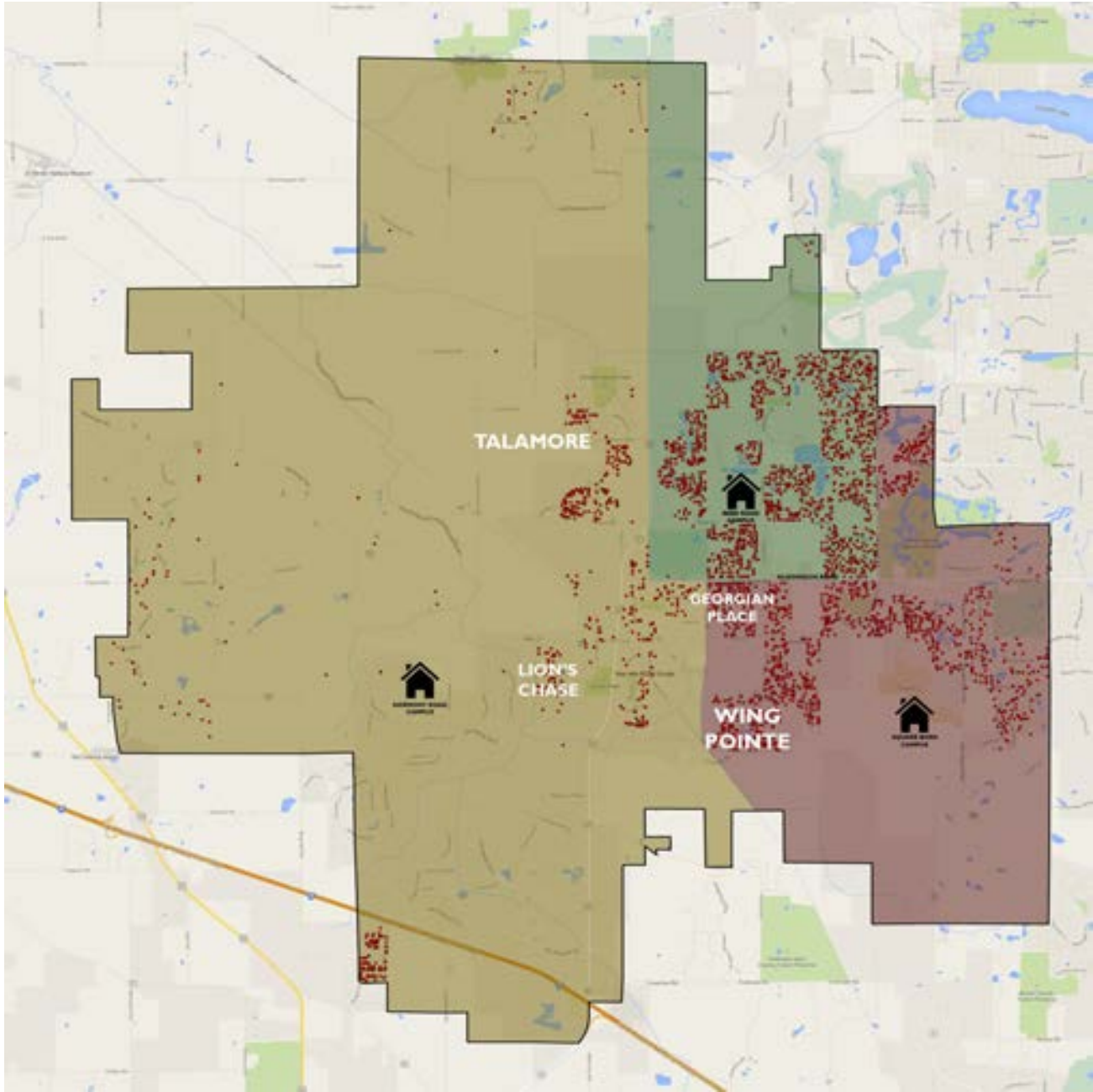


**DECISION**INSITE

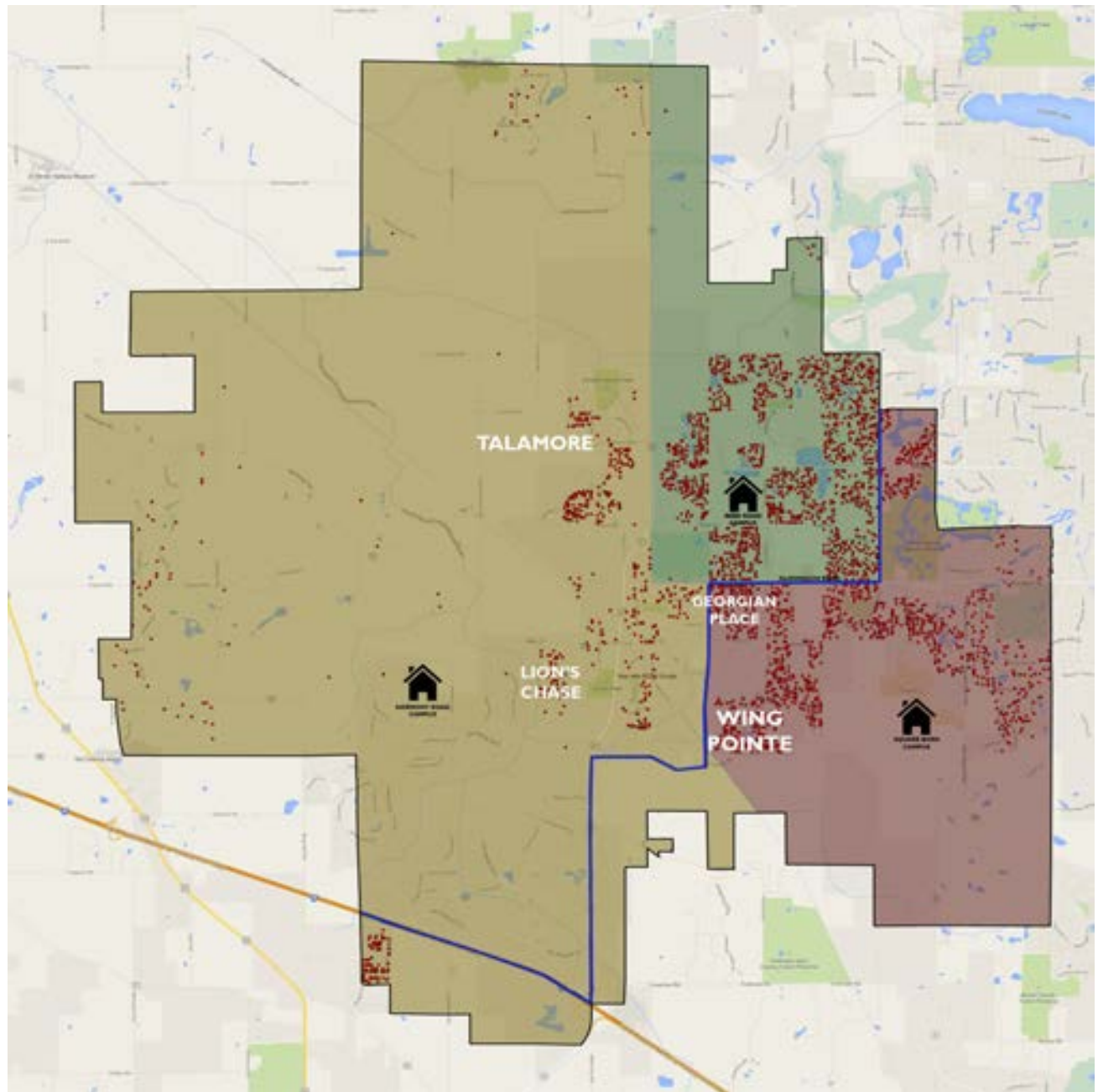
# Current Elementary Boundaries



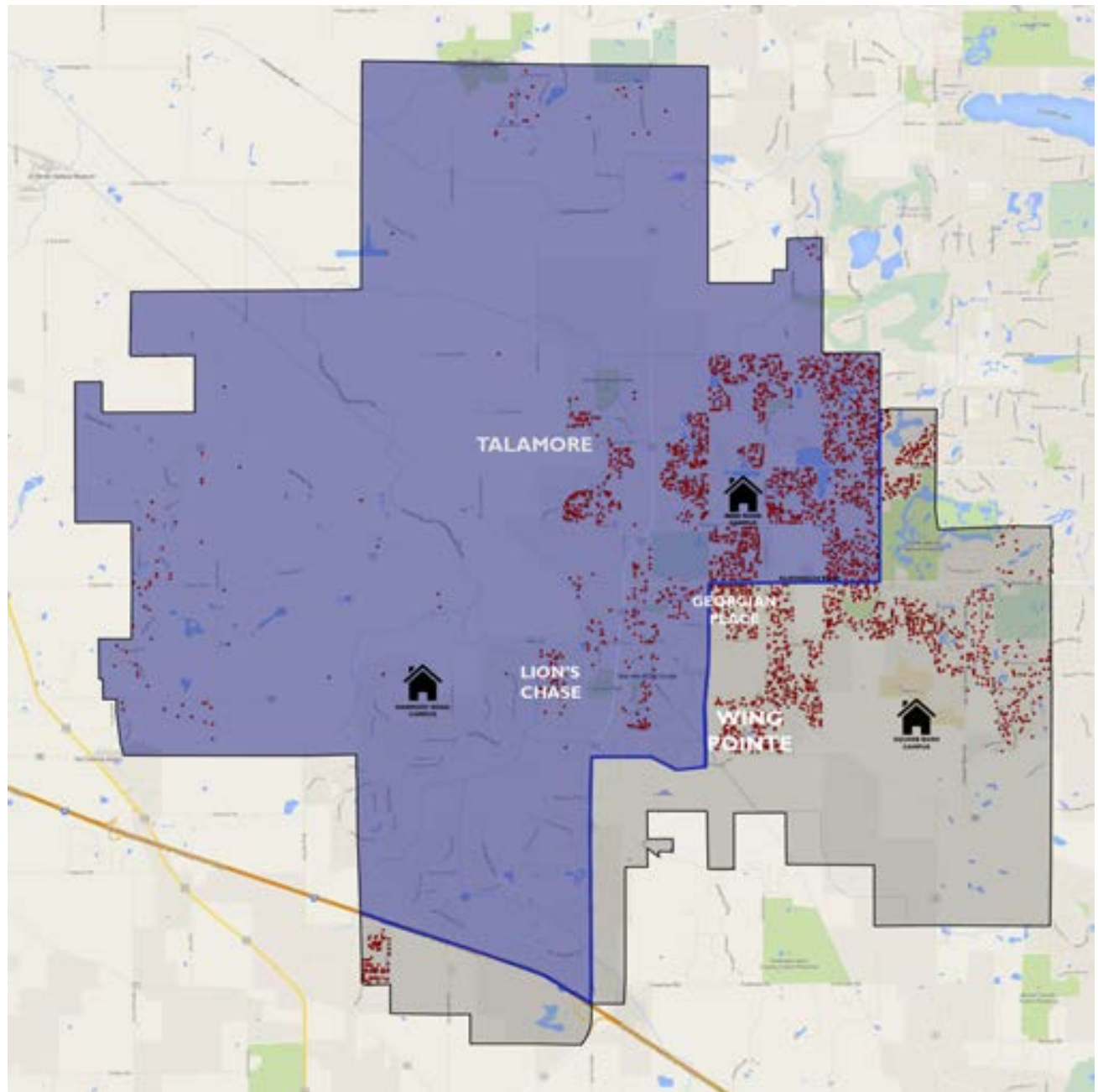
# Scenario 2 Elementary Boundaries



Scenario 2  
with  
Middle  
School  
Boundaries



Scenario 2  
with  
Middle  
School  
Boundaries  
Shaded



# Scenario 2 Impact

## **Total number of K-5 students moved by 2017:**

- Leggee to Mackeben/Conley 416 K-5 students

## **Pros**

- Moves fewer total students than other options

## **Cons**

- As drawn, does not provide enough immediate space relief to Leggee Elementary School
- Would require full implementation in Year One without phase-in
- Buses to Leggee must continue to cross Route 47