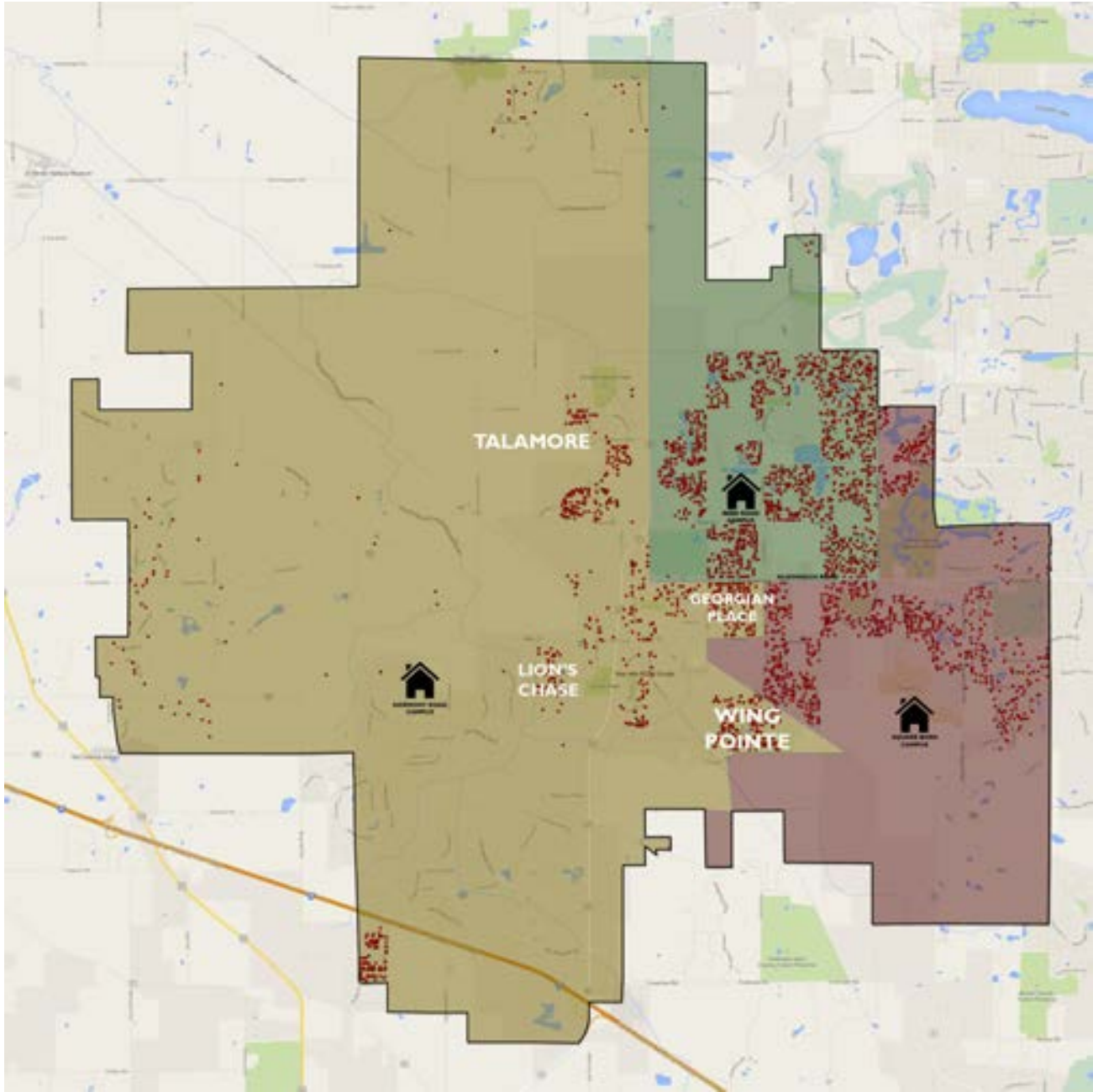


Boundary Change Scenario 1

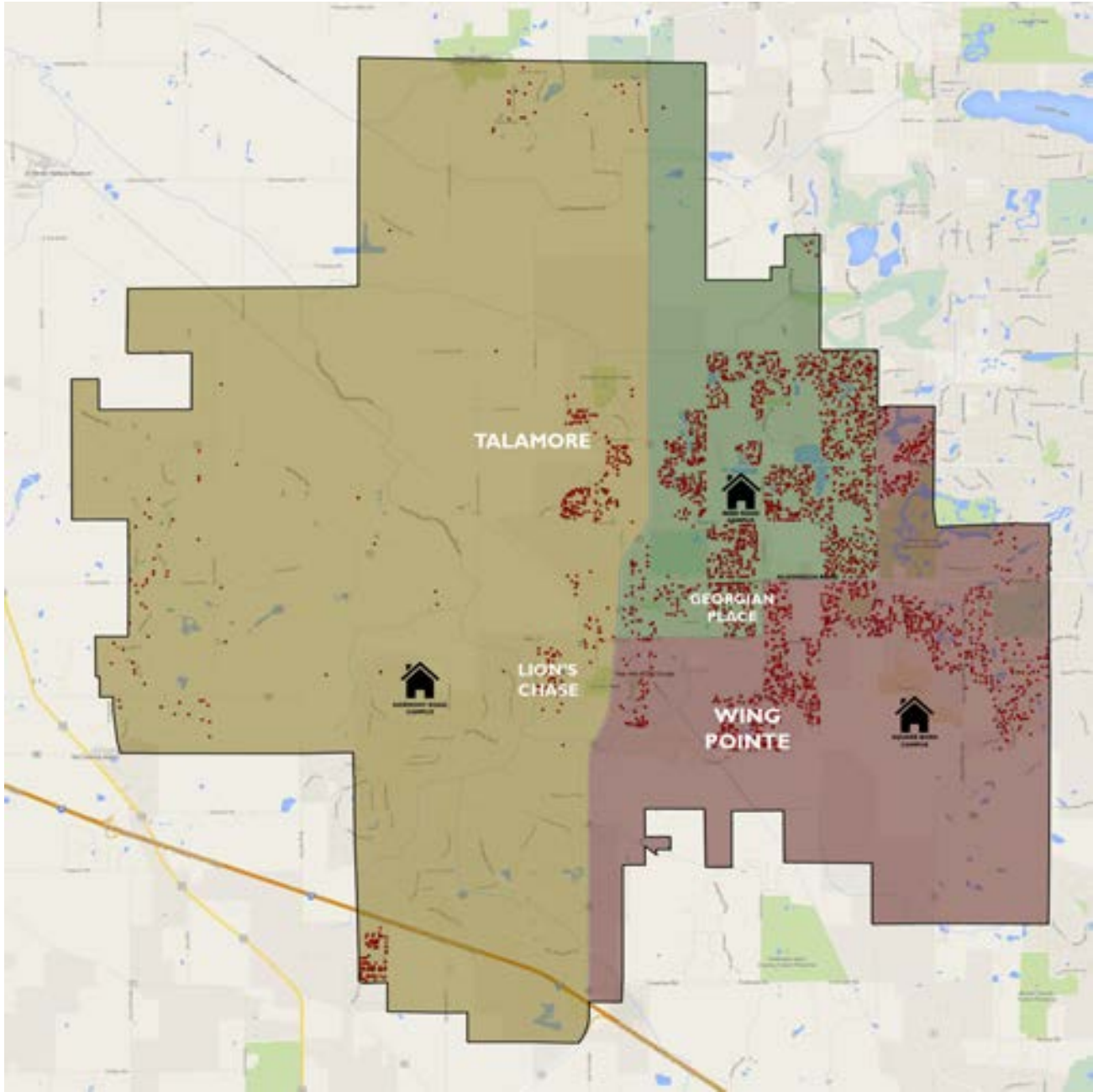


DECISIONINSITE

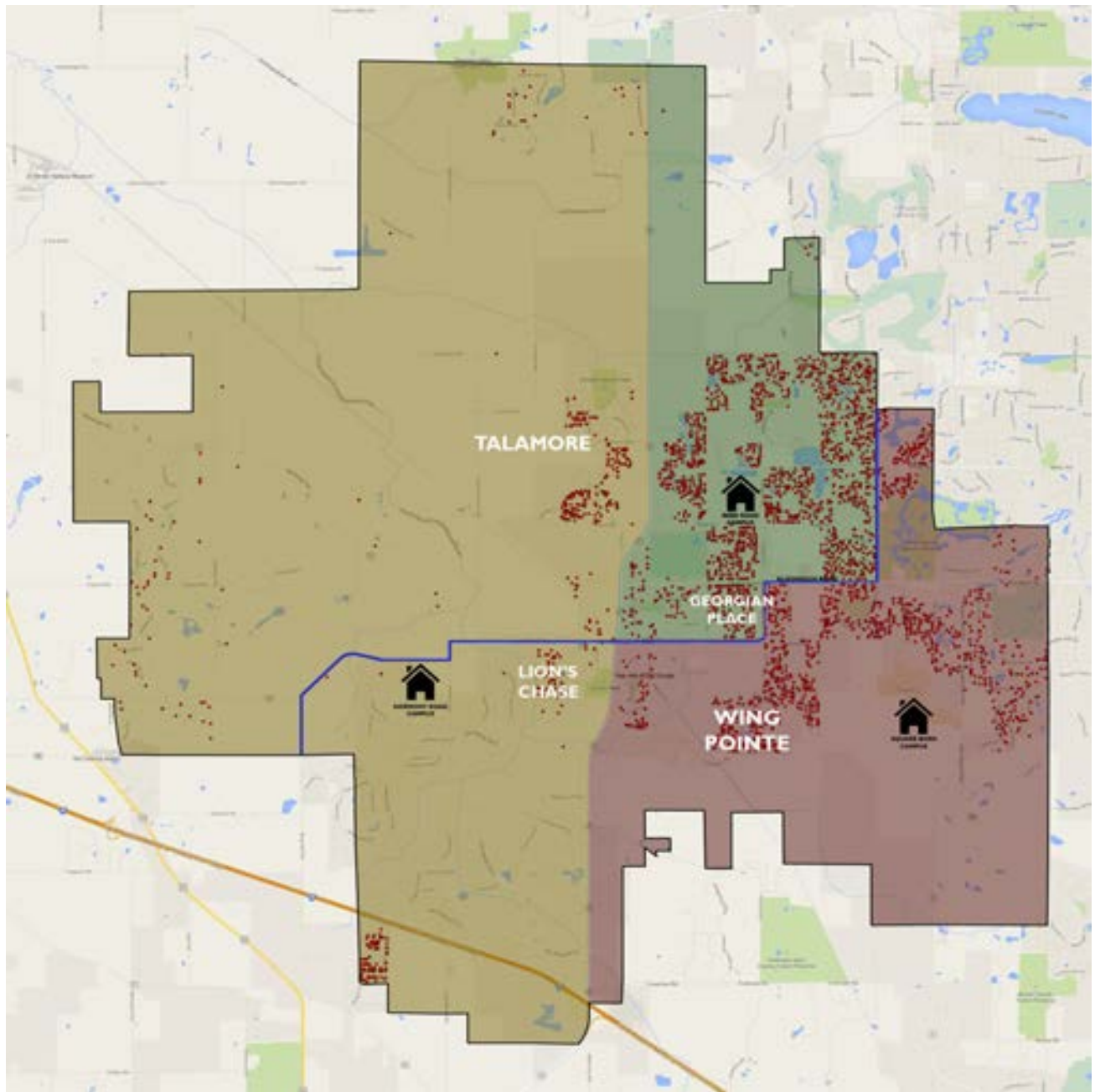
Current Elementary Boundaries



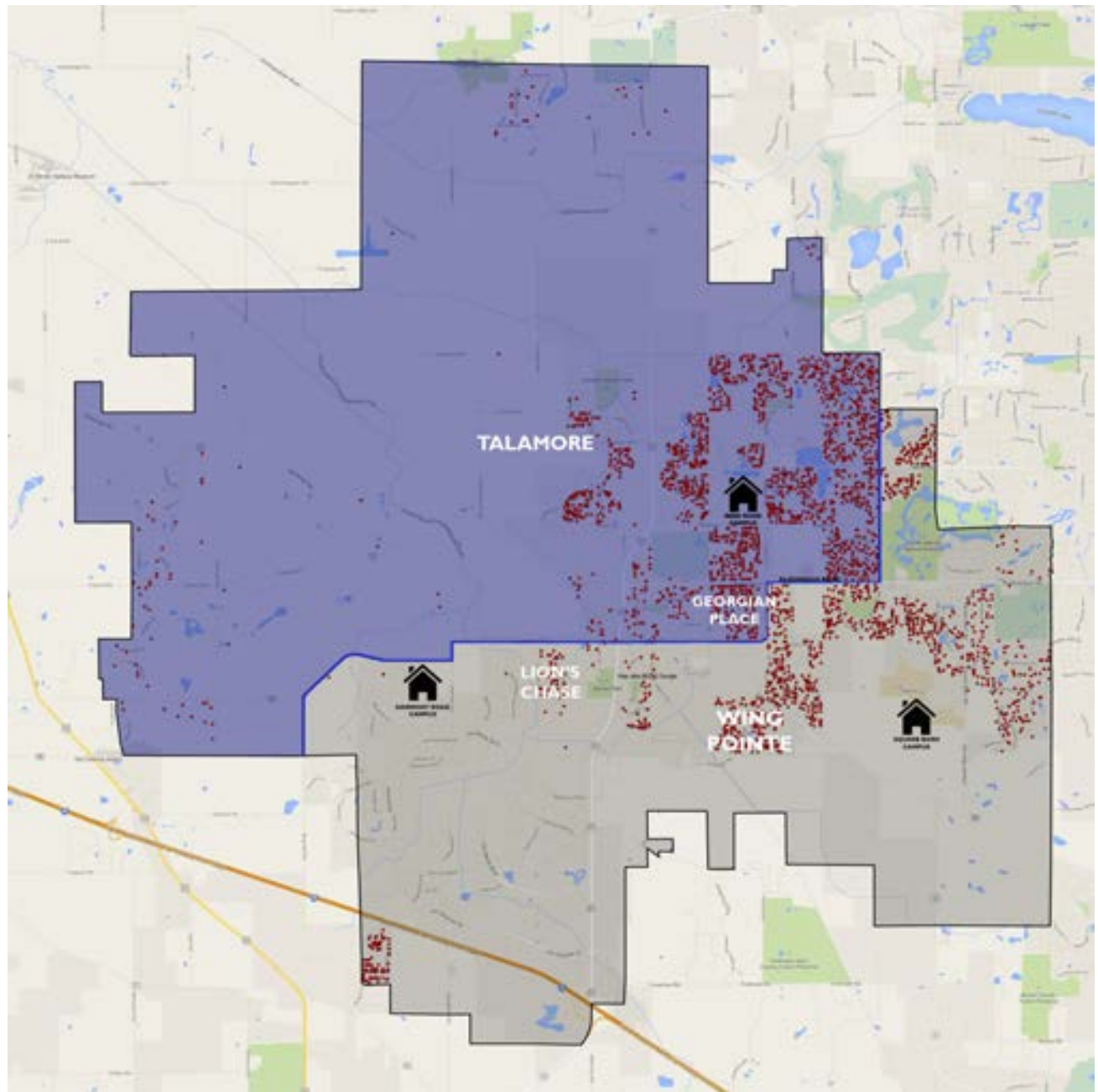
Scenario 1 Elementary Boundaries



Scenario 1
with
Middle
School
Boundaries



Scenario 1
with
Middle
School
Boundaries
Shaded



Scenario 1 Impact

Total number of K-5 students moved by 2017:

- Leggee to Chesak/Martin 281 K-5 students
- Leggee to Mackeben/Conley 330 K-5 students

Pros

- Allows for three-year phase-in while immediately freeing needed space at Leggee Elementary School
- Creates a clean East-West dividing line along Route 47
- Less bus travel across Route 47 and railroad tracks

Cons

- Moves more total students than Scenario 2